

Clinical & Intake



McCONN
SHANN
DENTAL COOR

GEE,
AB

MATSUM
RHON
SPCH LANG

RETTIN
MA
ASD CL

BLONDIN-
LORRA
NURSI

NORMAN, E
ABA

MEDA
MELYN
NURSI



INTAKE & CLIN
HOUSTON, CAMELIA

INTAKE MGR
MCREARY, AMY

INTAKE MGR
KUWAZAKI, TIMOTHY

INTAKE MGR
STEWART, BRANDY

INTAKE MGR
SHARMA, JYOTI

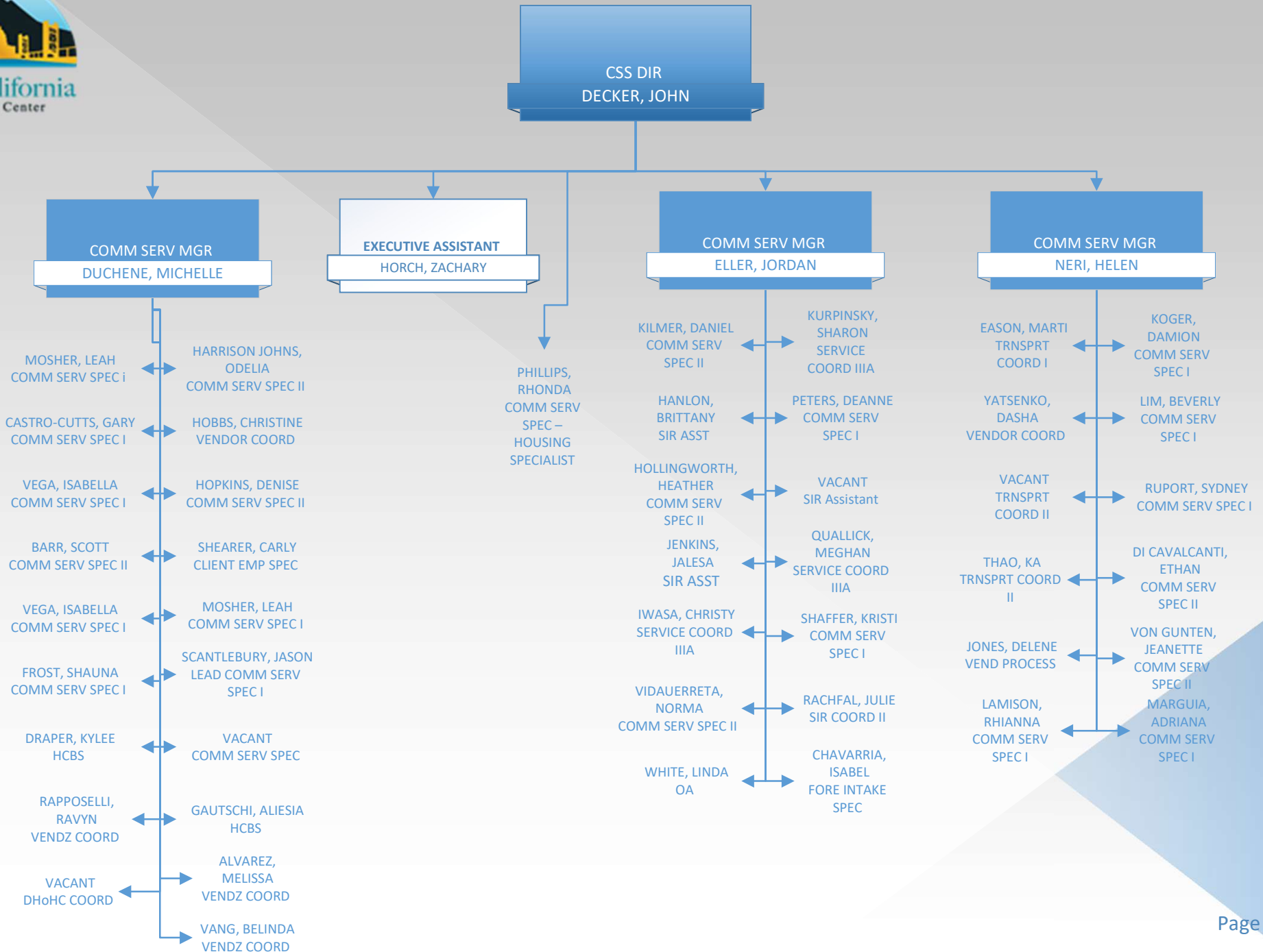
- McCONNELL, SHANNON
ITAL COORDINATOR
- GEE, ANA
ABA
- MATSUMOTO, RHONDA
SPCH LANG PATH
- RETTINHOUSE, MARY
ASD CLIN SPEC
- BLONDIN-SMITH, LORRAINE
NURSE II
- ORMAN, BREANNA
ABA
- MEDALLE, MELYNDA
NURSE
- FLANAGAN, JENELL
ABA
- LANGTON, EMILY
ABA
- YOUNG, SHERYL
NURSE II
- STERLING, ERIN
ABA
- HENSLEY, MONAE
NURSE I
- WEUBBE, LAURA
ABA
- DeANDA, MARIA
NURSE II

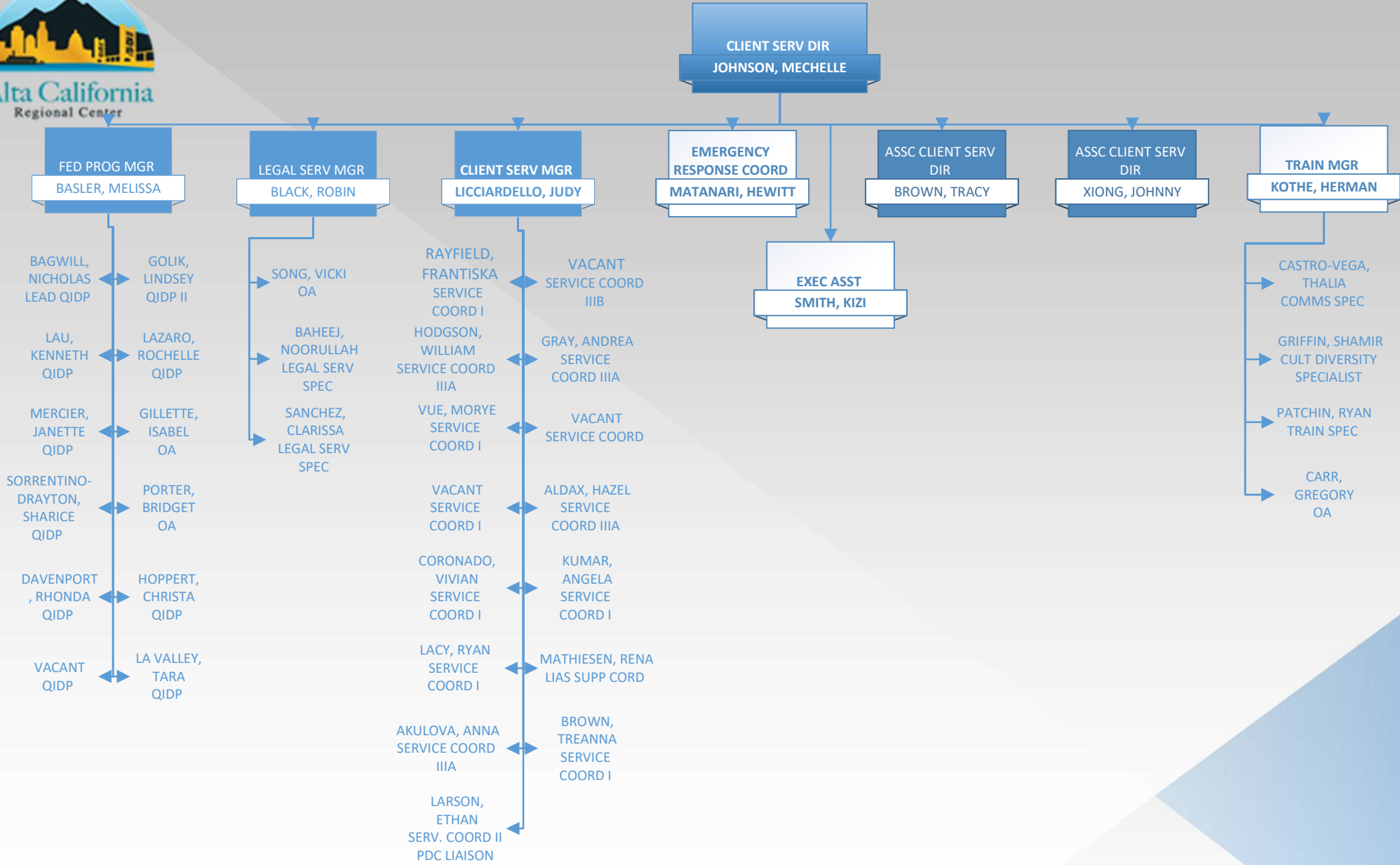
- HALE, BRITTANY
INTAKE SPEC IIIA
- STEWART, LISA
LEAD INTAKE SPEC IIIA
- MAHANEY, ALEXANDER
INTAKE SPEC IIIB
- SMITH, DEVANTE
INTAKE SPEC IIIA
- VELA, DESIREE
INTAKE SPEC IIIB
- HAUPT, BRITTNEY
INTAKE SPEC IIIA
- FRENCH, ASHLEY
INTAKE SPEC IIIB
- HAYES, MEGAN
INTAKE SPEC IIIB
- DRAGONY, CAITLIN
INTAKE SPEC IIIA
- VACANT
LEAD INTAKE SPEC IIIA

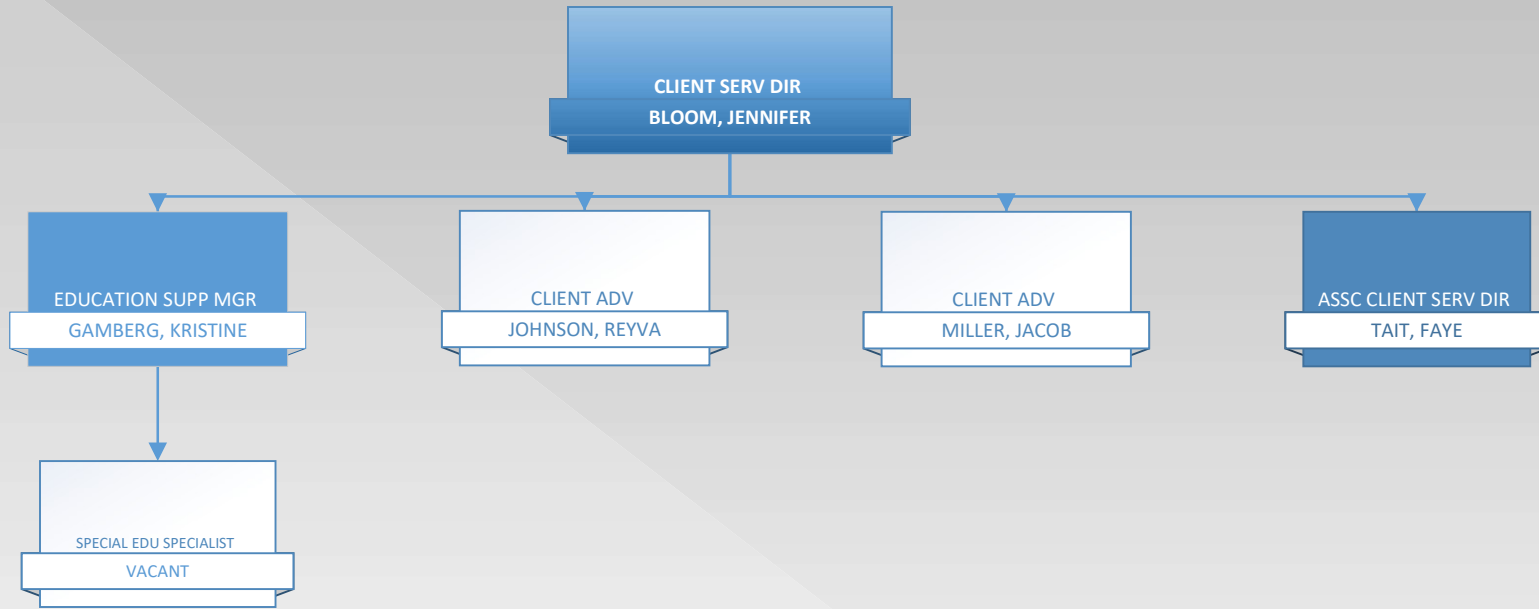
- MORENO, REBEKKA
INTAKE SPEC IIIA
- MURPHEY, LAUREN
INTAKE SPEC IIIB
- LAMBERT, ASHLEY
INTAKE SPEC IIIA
- VARGAS, DORENA
INTAKE SPEC IIIA
- VANG, MATHEW
INTAKE SPEC IIIA
- FOX, JESSICA
INTAKE SPEC IIIB
- PHAN, TRANG
INTAKE SPEC IIIB

- ROOT STENKEN, CYNTHIA
LEAD PSYCH
- MILROY, KATE
PHYS II
- STUPAK, YULIPA
PSYCH
- VACANT
PSYCH
- VACANT
PHYS II
- FRIEDMAN, BARBARA
PHYS II
- CRENSHAW, SPARKLE
PSYCH ASSOCIATE
- PHILIP, SINDHU
PSYCH
- JUAN FISHMAN, CATARINA
PSYCH II
- MODESTE, CARL
PSYCH

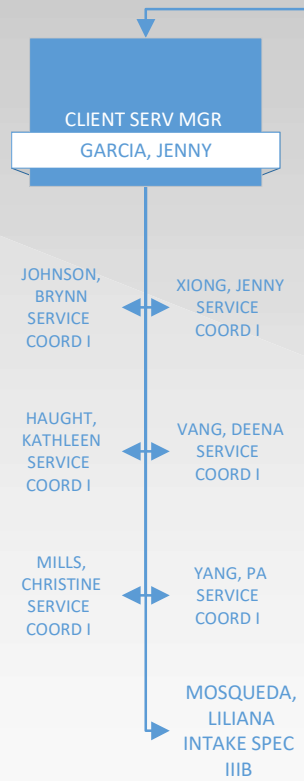
- VACANT
LEAD INTAKE SPEC IIIA
- ADAMS, MICHELLE
INTAKE SPEC IIIA
- HALWANI, TAMARA
INTAKE SPEC IIIA
- CARLSON-ZAPATA, NANCY
INTAKE SPEC IIIA
- THAO, KANG
INTAKE SPEC IIIA
- GALIZA, CAYTLIN
INTAKE SPEC IIIA
- LOVERIDGE, EDWARD
INTAKE SPEC IIIA
- MOTHERSPA, SABRINA
INTAKE SPEC IIIA
- SAVAGE-MITCHELL, LINDA
INTAKE SPEC IIIA
- SANTIAGO, HILLARY
LEAD INTAKE SPEC IIIA





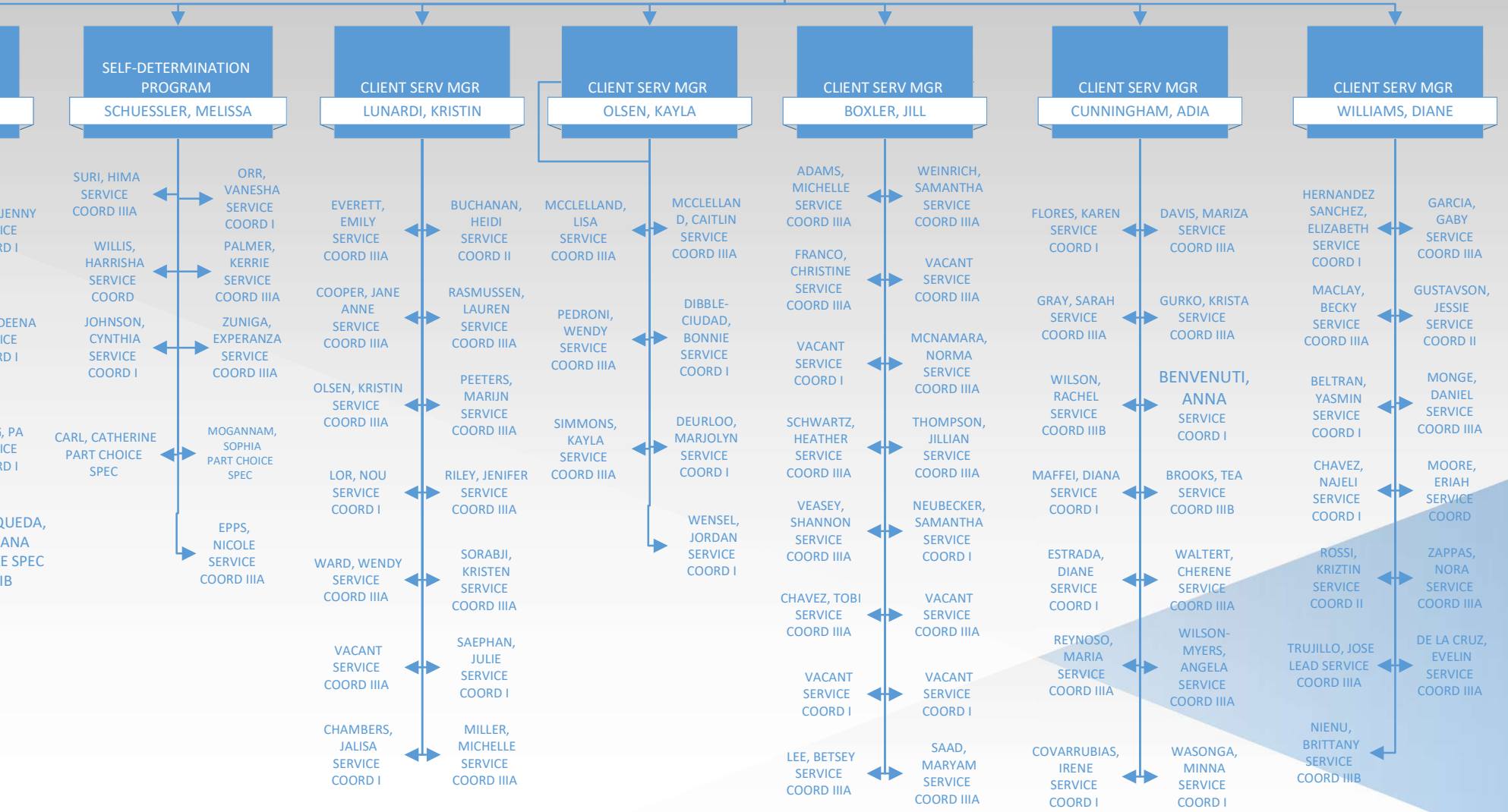


Associate Client Services Director - Early Intervention (EI)



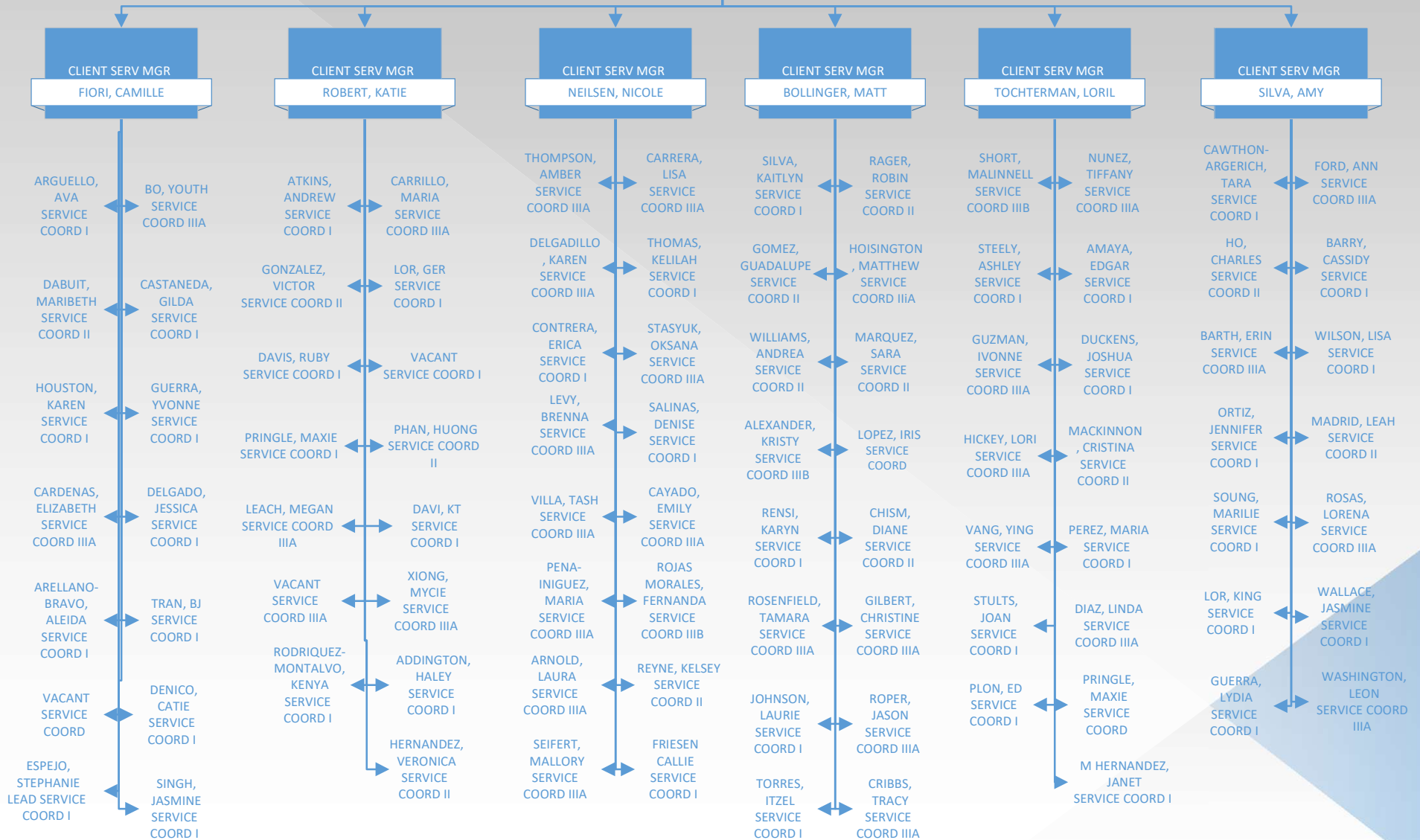


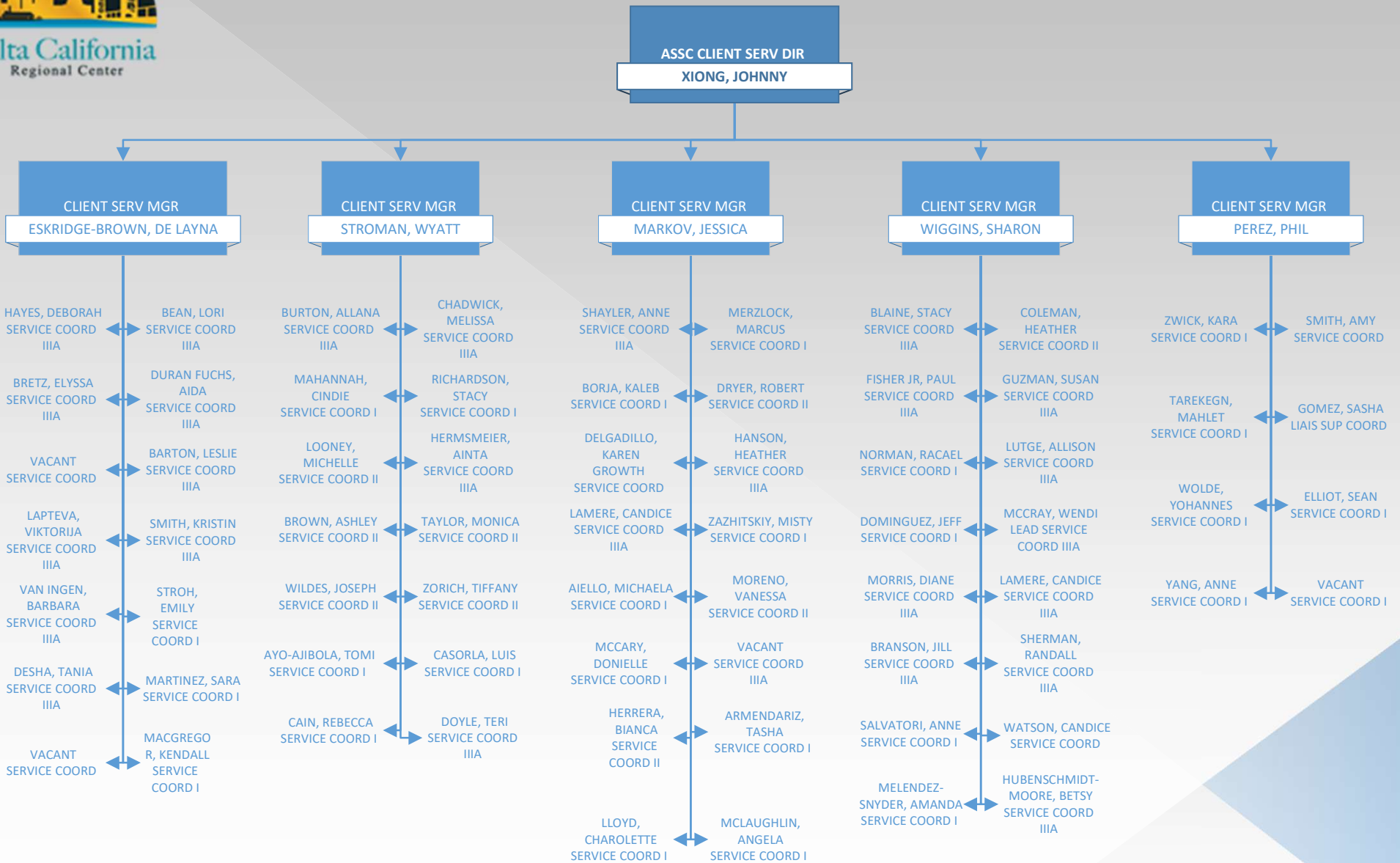
ASSC CLIENT SERV DIR
TAIT, FAYE





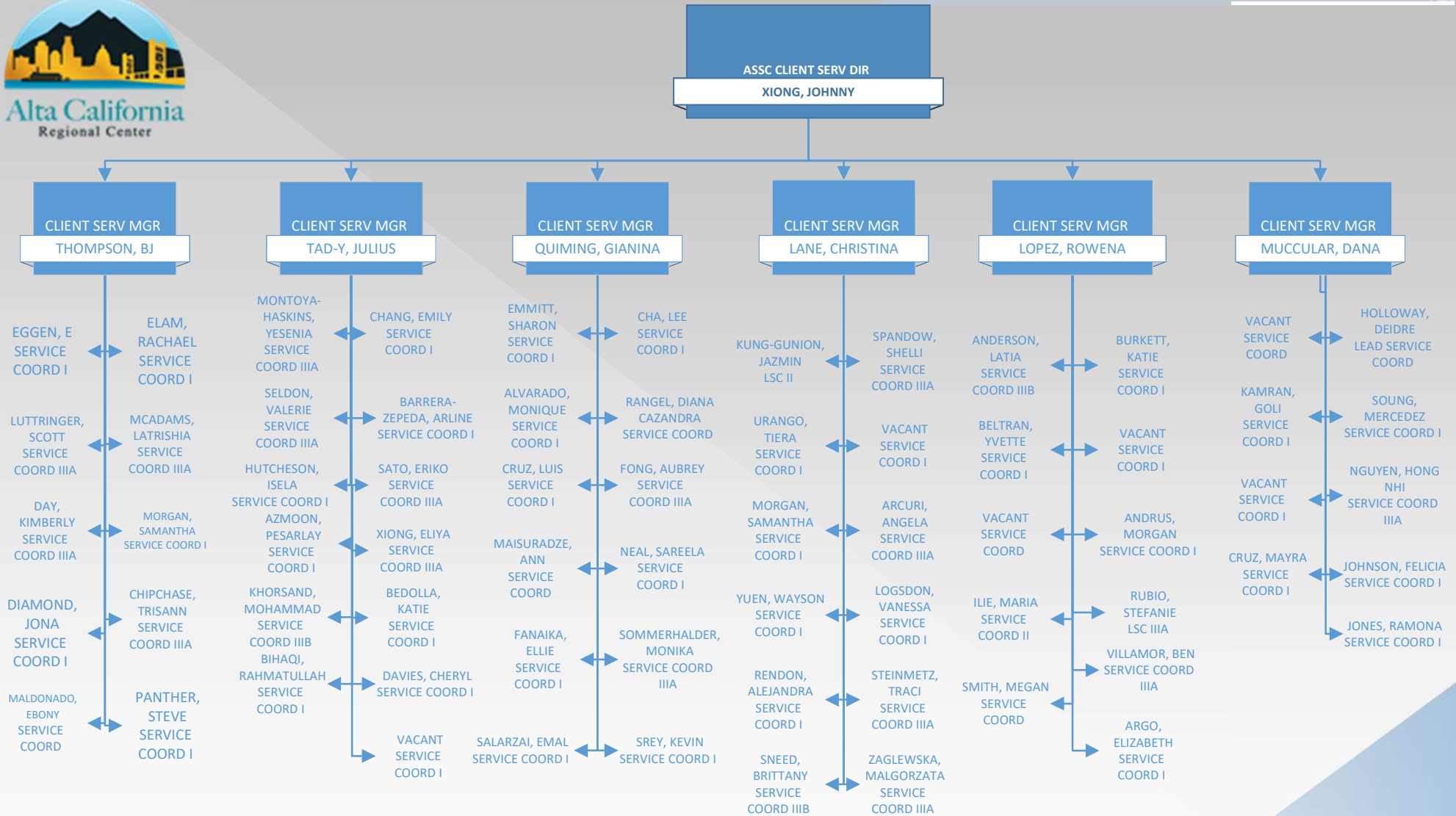
ASSC CLIENT SERV DIR
TAIT, FAYE

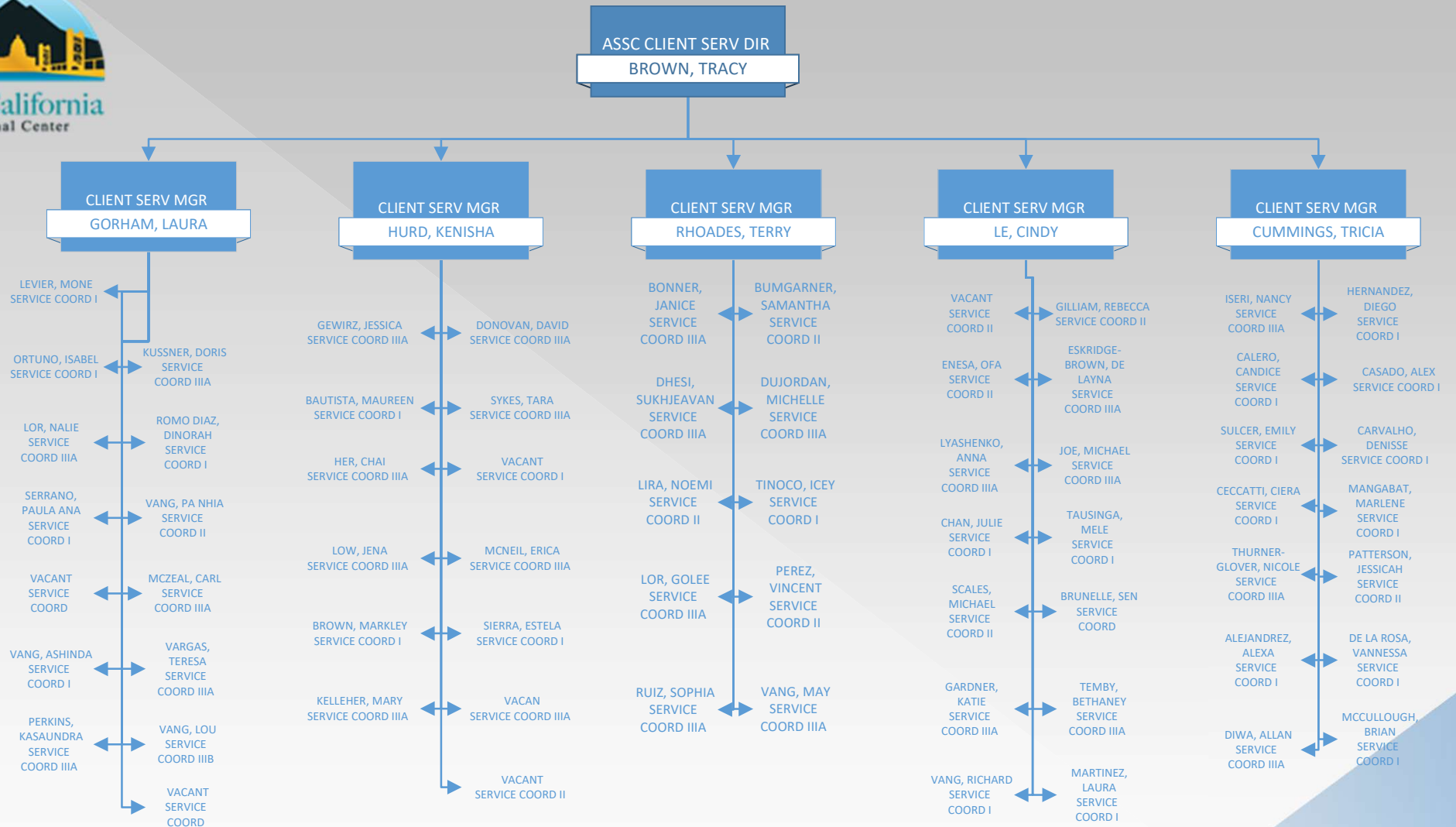




Associate Client Services Director – Adults (Sacramento)

October 31, 2023







ASSC CLIENT SERV DIR
BROWN, TRACY

