



EXECUTIVE ASSISTANT  
HORCH, ZACHARY

CSS DIR  
DECKER, JOHN

COMM SERV MGR  
DUCHENE, MICHELLE

ARAUJO, JOLANNA COMM SERV SPEC II	HARRISON JOHNS, ODELIA COMM SERV SPEC II
CRUZ, ALEJANDRA COMM SERV SPEC II	HOBBS, CHRISTINE VENDOR COORD
VEGA, ISABELLA COMM SERV SPEC I	HOPKINS, DENISE COMM SERV SPEC II
KASPER, THOMAS COMM SERV SPEC I	MOORMAN, CARLY CLIENT EMP SPEC
KOGER, DAMION COMM SERV SPEC II	LYNN, SAMMI COMM SERV SPEC I
FROST, SHAUNA COMM SERV SPEC I	JEFFERS, BRANDI COMM SERV SPEC II
MERCADO, MICHAEL DHH COMM COORD	VACANT LEAD COMM SERV SPEC I
RAPPOSELLI, RAVYN VENDZ COORD	ALVAREZ, MELISSA VENDZ COORD
GARCIA MALDONADO, EBONY CSS I	VANG, BELINDA VENDZ COORD

COMM SERV MGR  
BARR, SCOTT

ZEPEDA, YVETTE COMM SERV SPEC II	VACANT HCBS SPEC
DRAPER, KYLEE HCBS SPEC	JENKINS, JALESA SIR ASST.
LAMISON, RHIANNA COMM SERV SPEC I	LAMB, KYLIE SIR ASST.
VACANT COMM SERV SPEC I	VAN ECK, ALIESIA HCBS SPEC
VACANT OA	SMITH, BOYD COMM SERV SPEC I
YUEN, WAYSON COMM SERV SPEC I	GALLOWAY, BRITTNEY SIR ASST.
KAJLEY, ALINA COMM SERV SPEC II	VANGKHANG, STACEY QACS

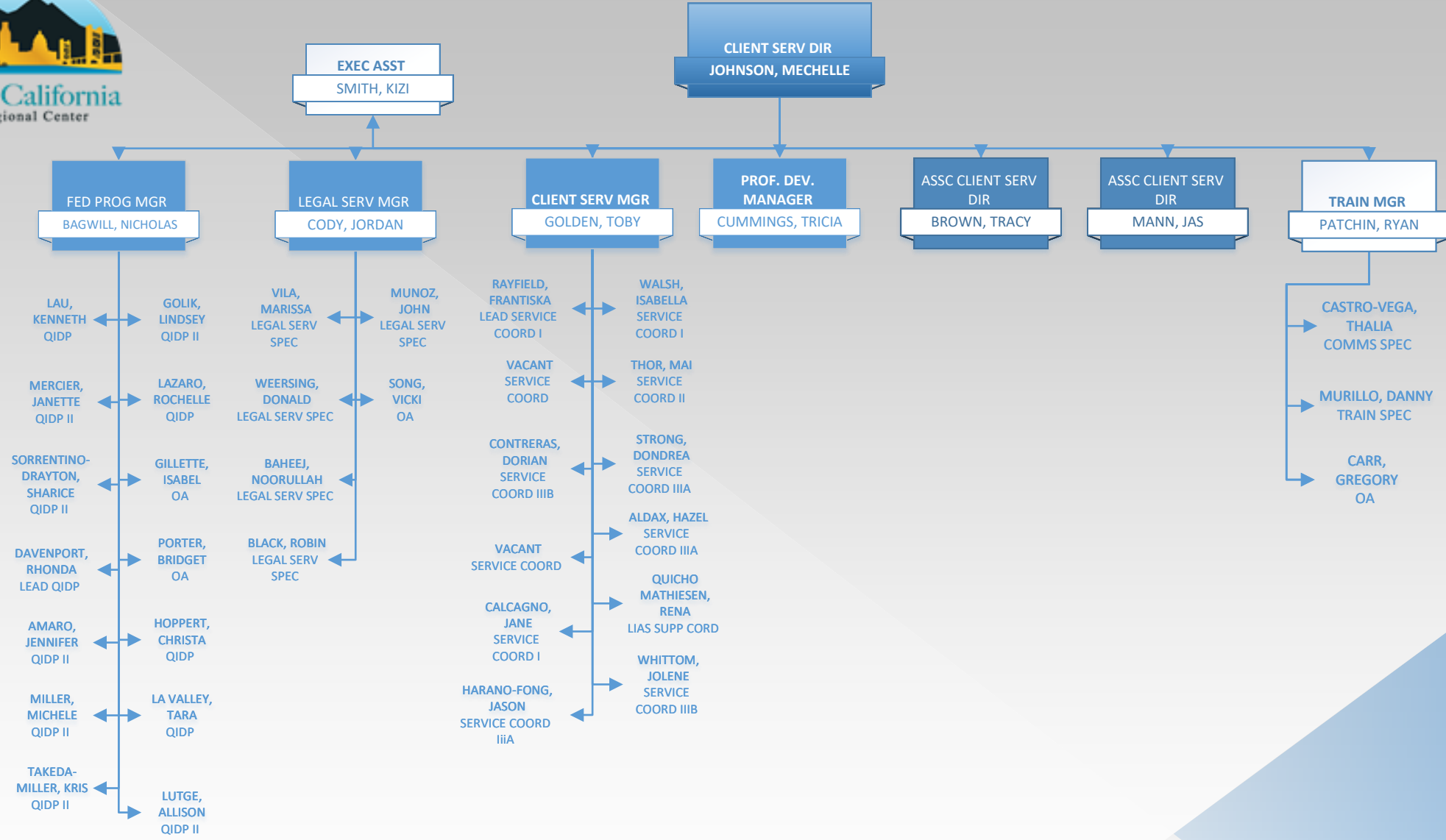
PHILLIPS,  
RHONDA  
COMM SERV  
SPEC – HOUSING  
SPECIALIST

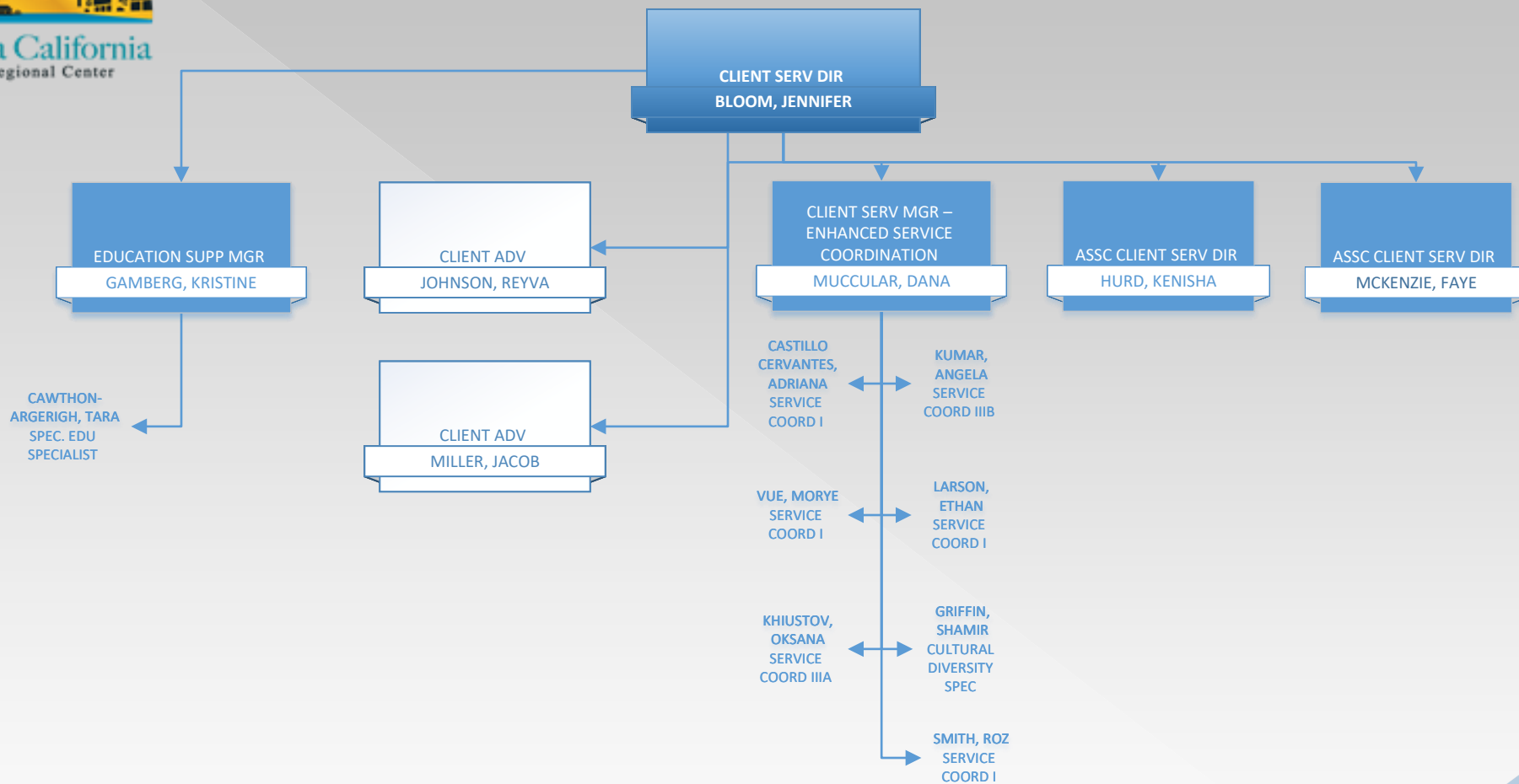
COMM SERV MGR  
ELLER, JORDAN

KILMER, DANIEL COMM SERV SPEC II	KURPINSKY, SHARON SERVICE COORD IIIA
LEVIER, MONE COMM SERV SPEC II	PETERS, DEANNE COMM SERV SPEC I
ENRIQUEZ, HUBERT EMERG RESP COORD	GABBY, VIRGINIA COMM SERV SPEC I
RHOADES, JANICE COMM SERV SPEC I	QUALLICK, MEGHAN FORE INTAKE SPEC
IWASA, CHRISTY SERVICE COORD IIIA	SHAFFER, KRISTI COMM SERV SPEC I
VIDAUERRETA, NORMA LEAD COMM SERV SPEC II	RACHFAL, JULIE SIR COORD II
WHITE, LINDA VENDZ COORD	CHAVARRIA-GOMEZ, ISABEL FORE INTAKE SPEC

COMM SERV MGR  
NERI, HELEN

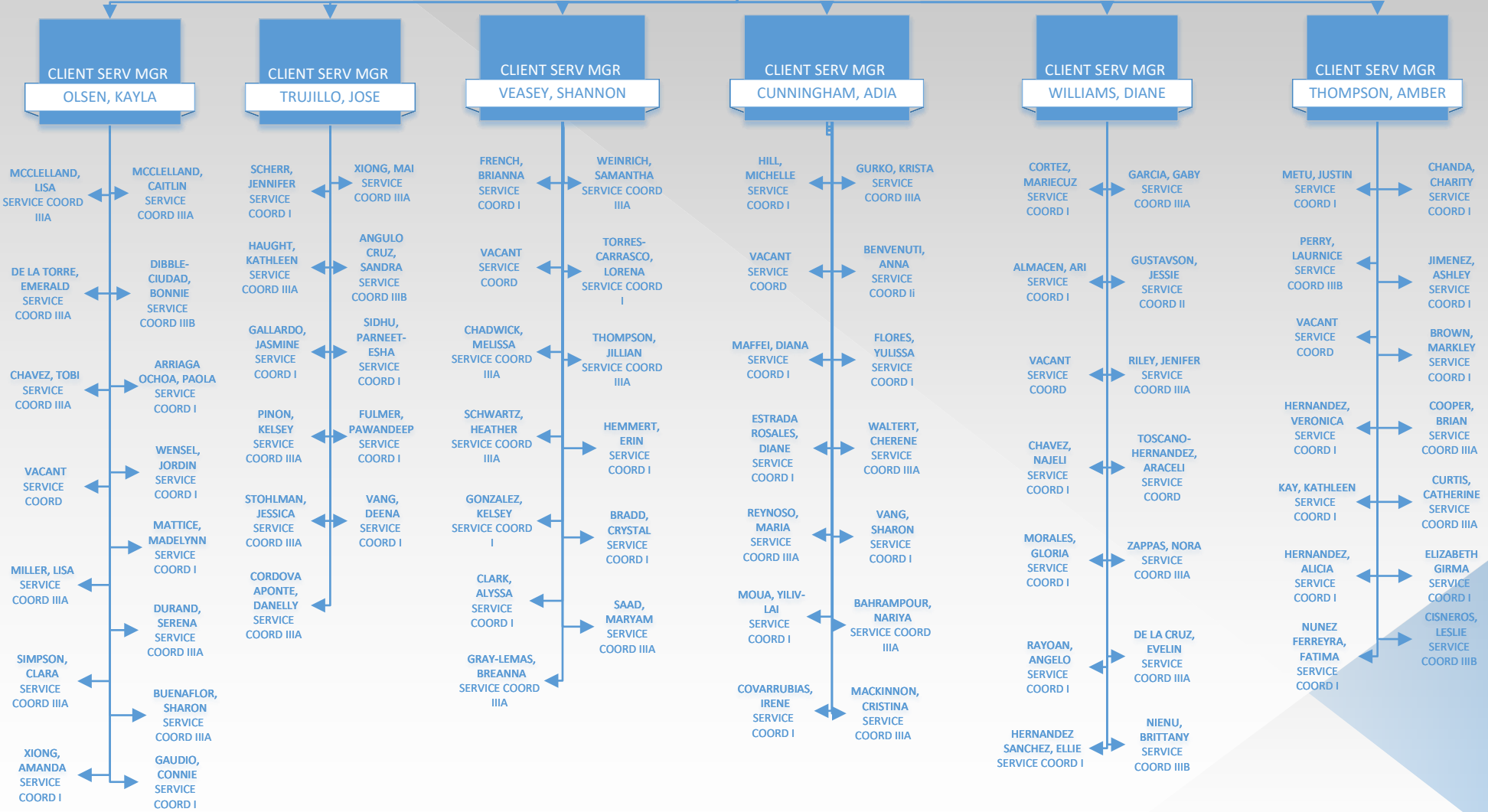
COLLINS, ALIAJHA COMM SERV SPEC II	JAUREGUI, JESSICA COMM SERV SPEC I
THAO, KA TRNSPRT COORD II	LIM, BEVERLY COMM SERV SPEC I
VACANT VEND PROCESS	VACANT COMM SERV SPEC
PADILLA, CHRISTINA OFFICE ASST	DI CAVALCANTI, ETHAN COMM SERV SPEC II
YELTON, MASON COMM SERV SPEC I	RICO, MARIA VENDOR COORD
FIACCO, ALLISON COMM SERV SPEC I	JACKSON, JAZZLYN COMM SERV SPEC I
FUKUHARA, ANNA COMM SERV SPEC I	PINALES, CHRISTINA COMM SERV SPEC I
JONES, DELENE VEND PROCESS	

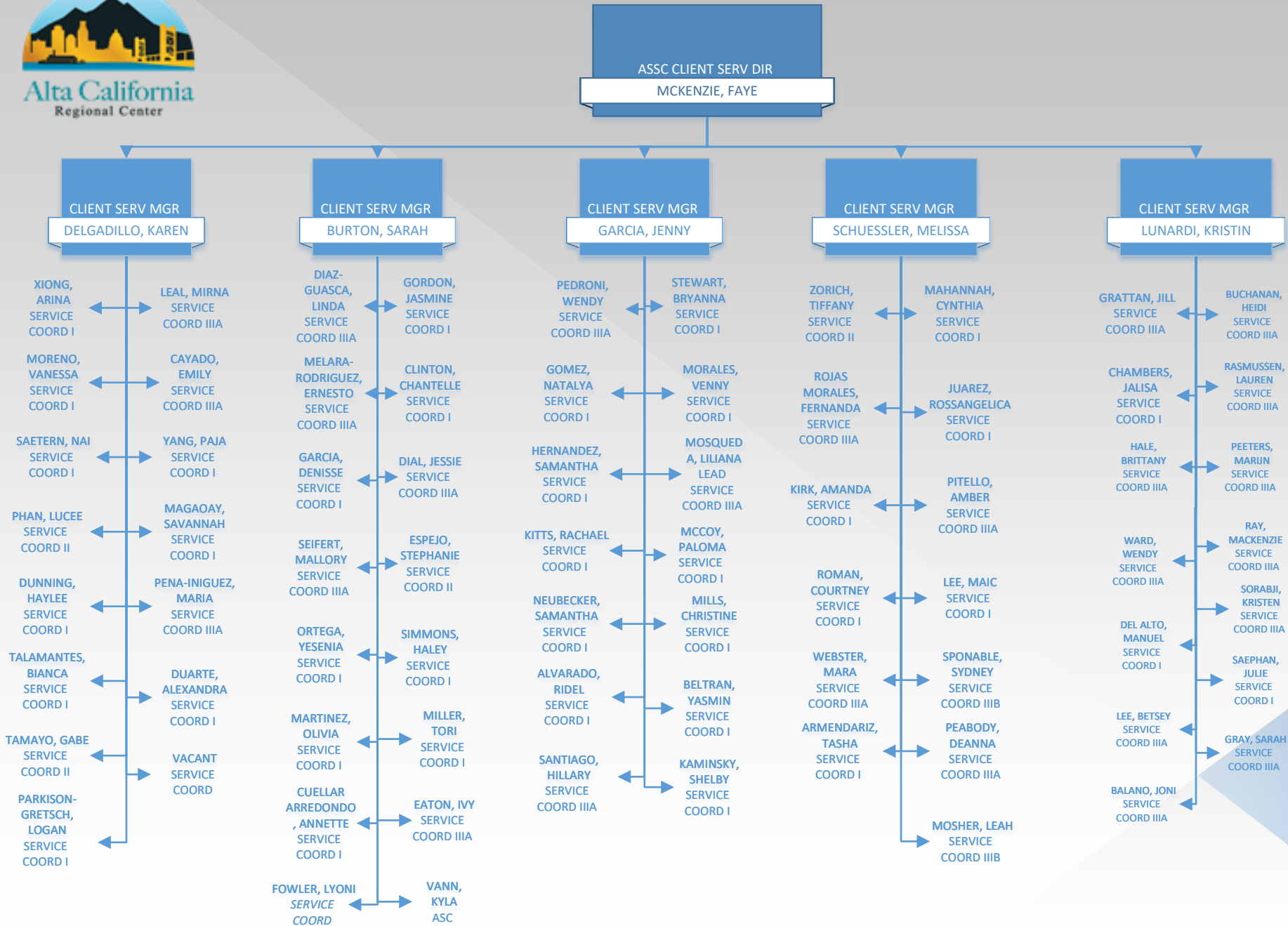


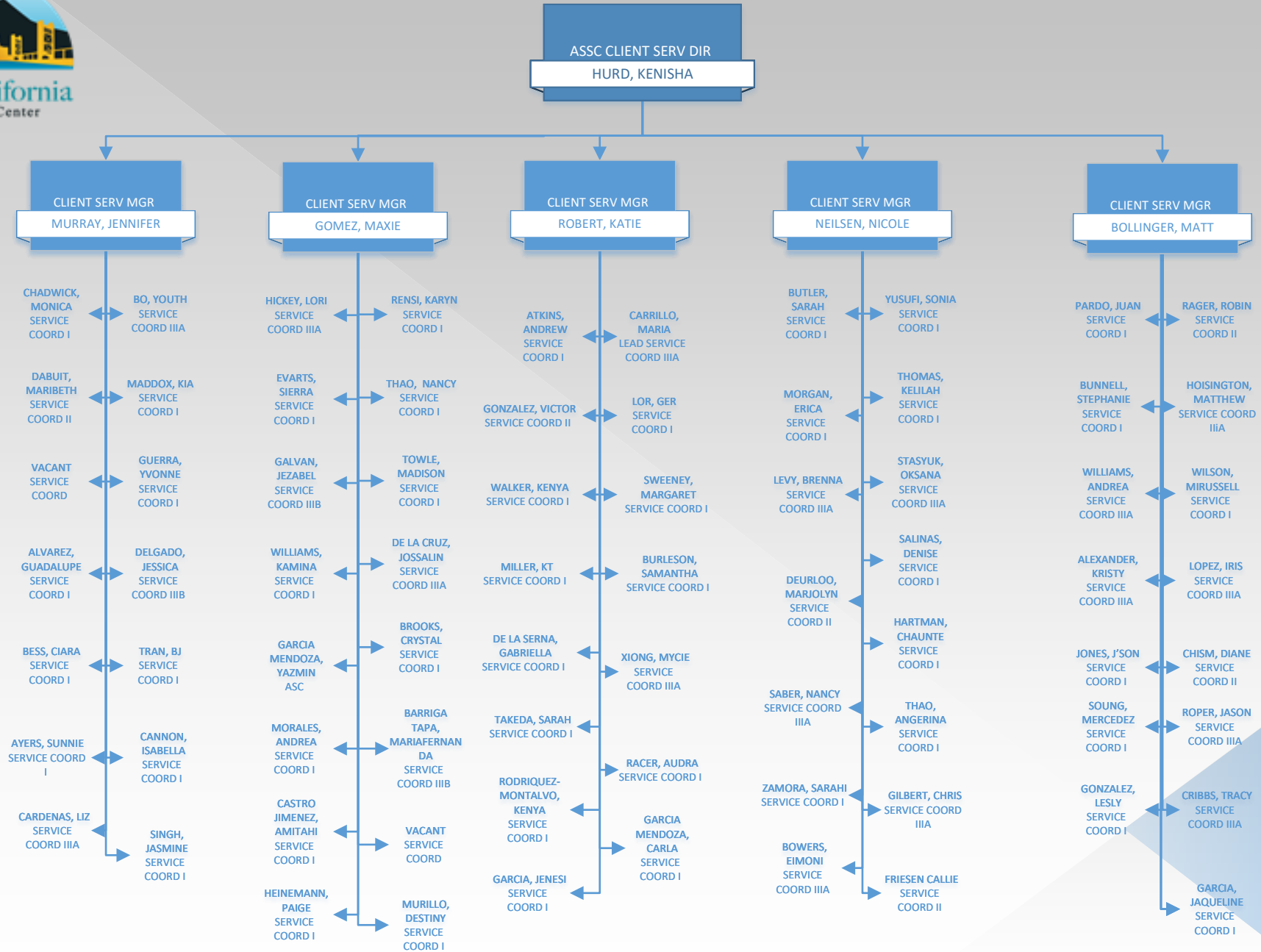


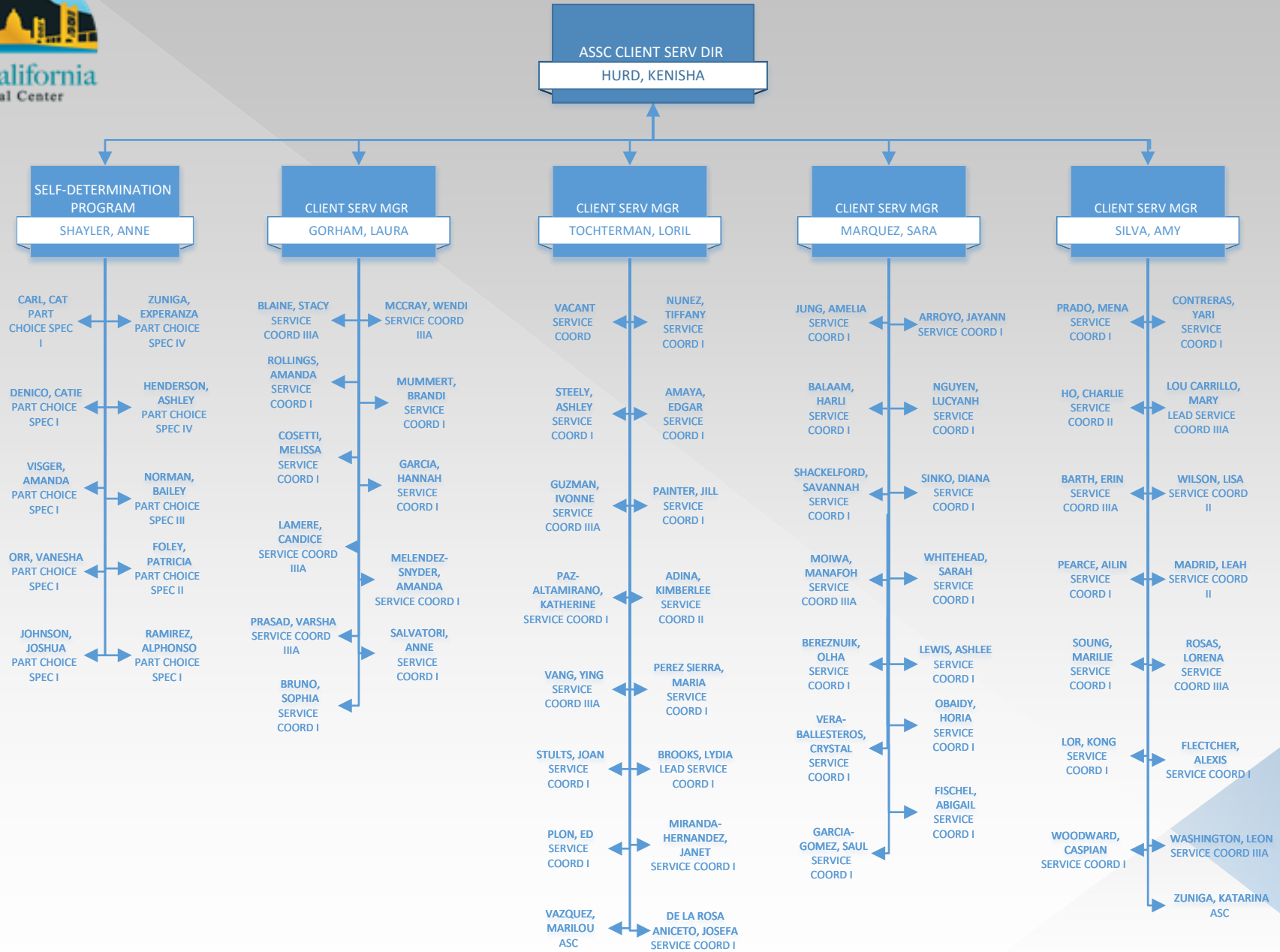


**ASSC CLIENT SERV DIR**  
MCKENZIE, FAYE



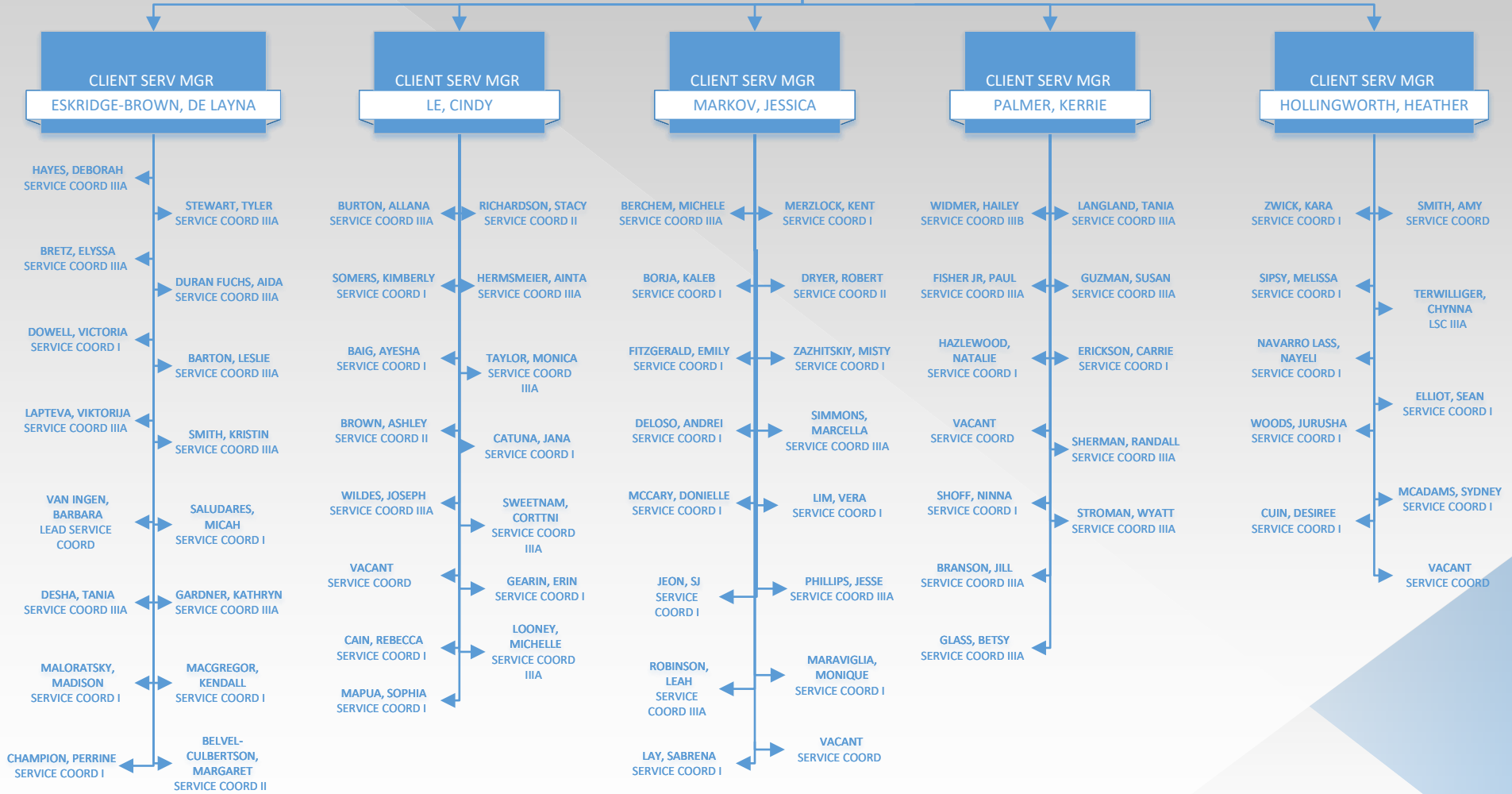








**ASSC CLIENT SERV DIR**  
MANN, JAS

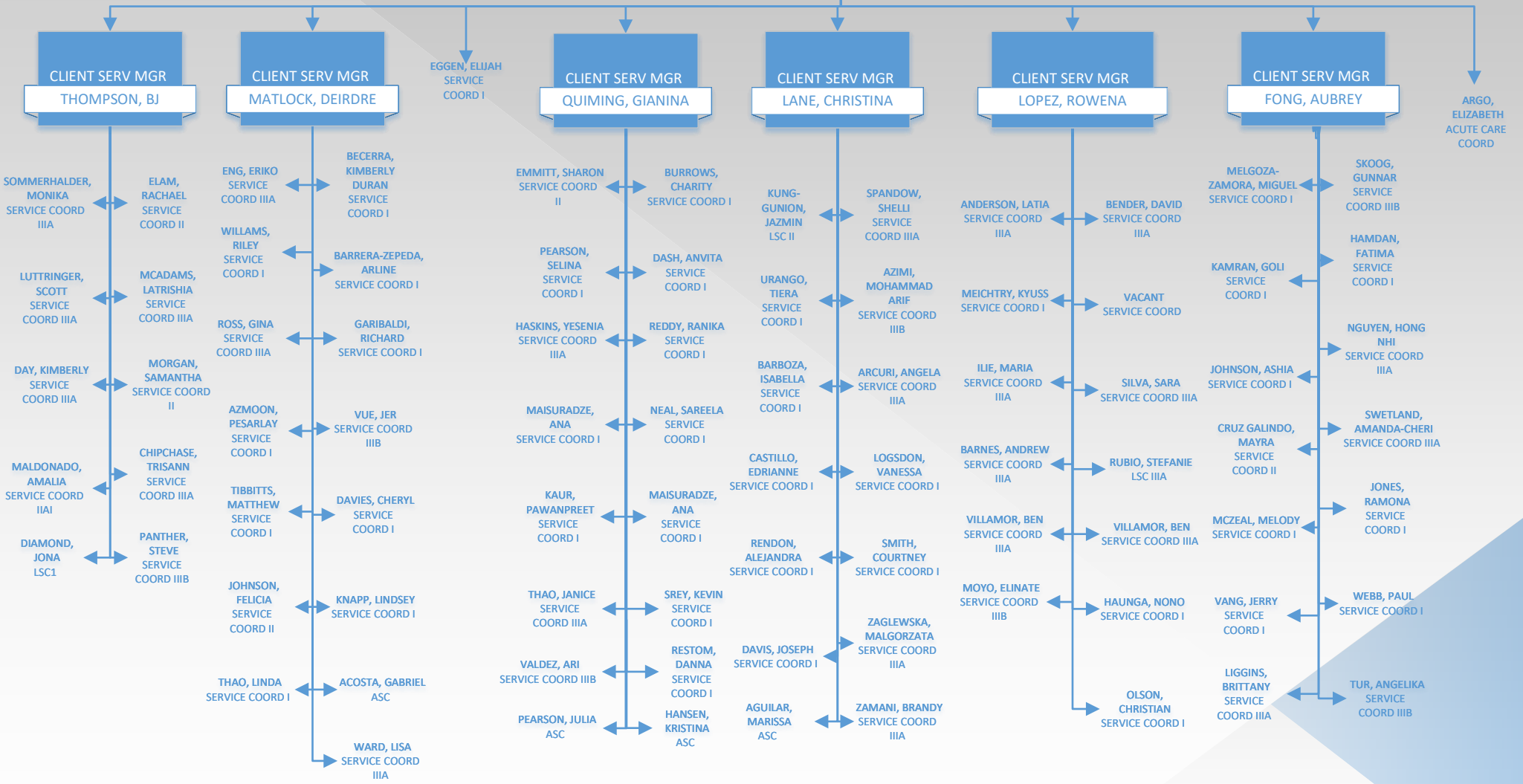


# Associate Client Services Director – Adults (Sacramento)

June 29, 2026

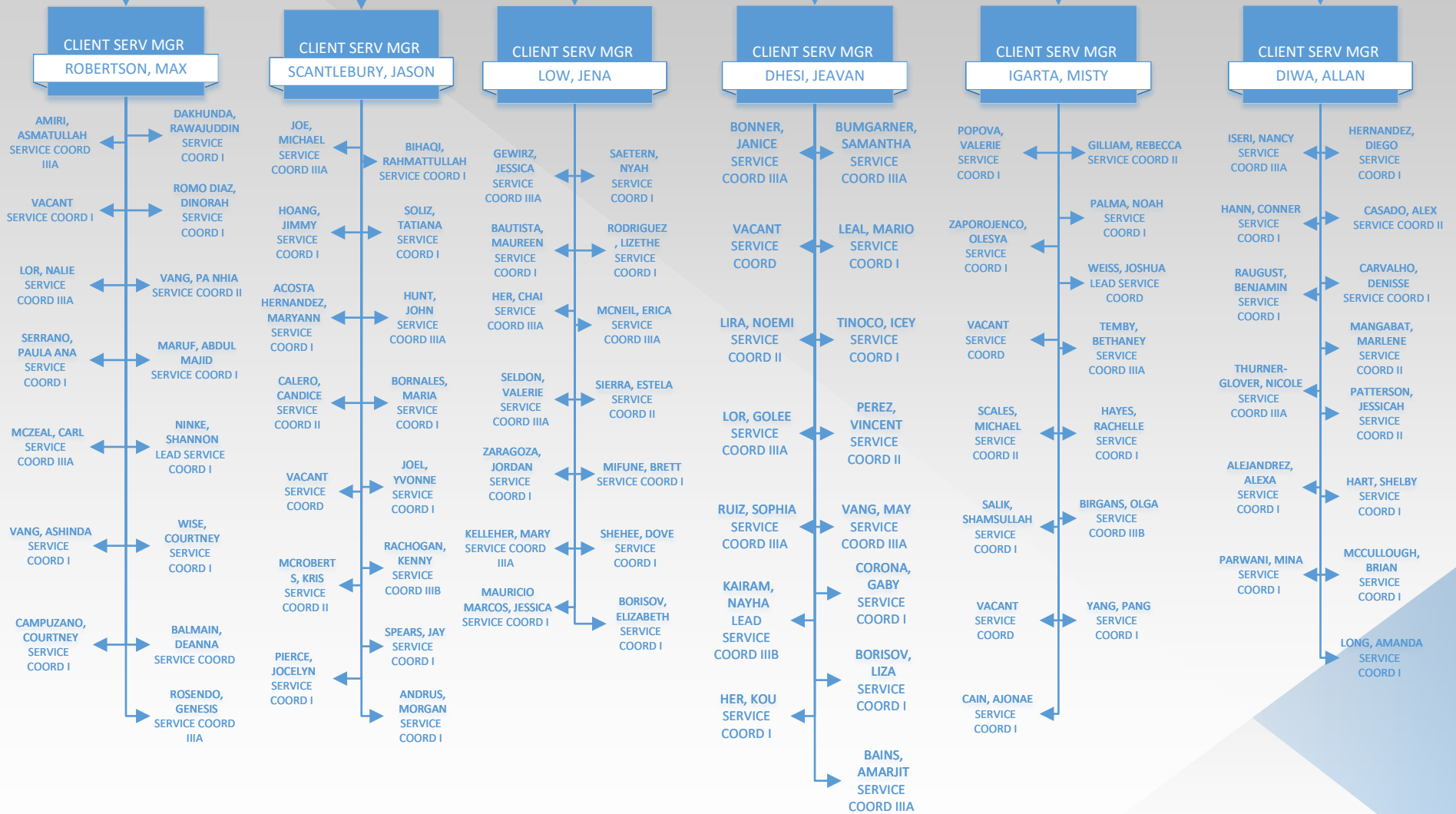


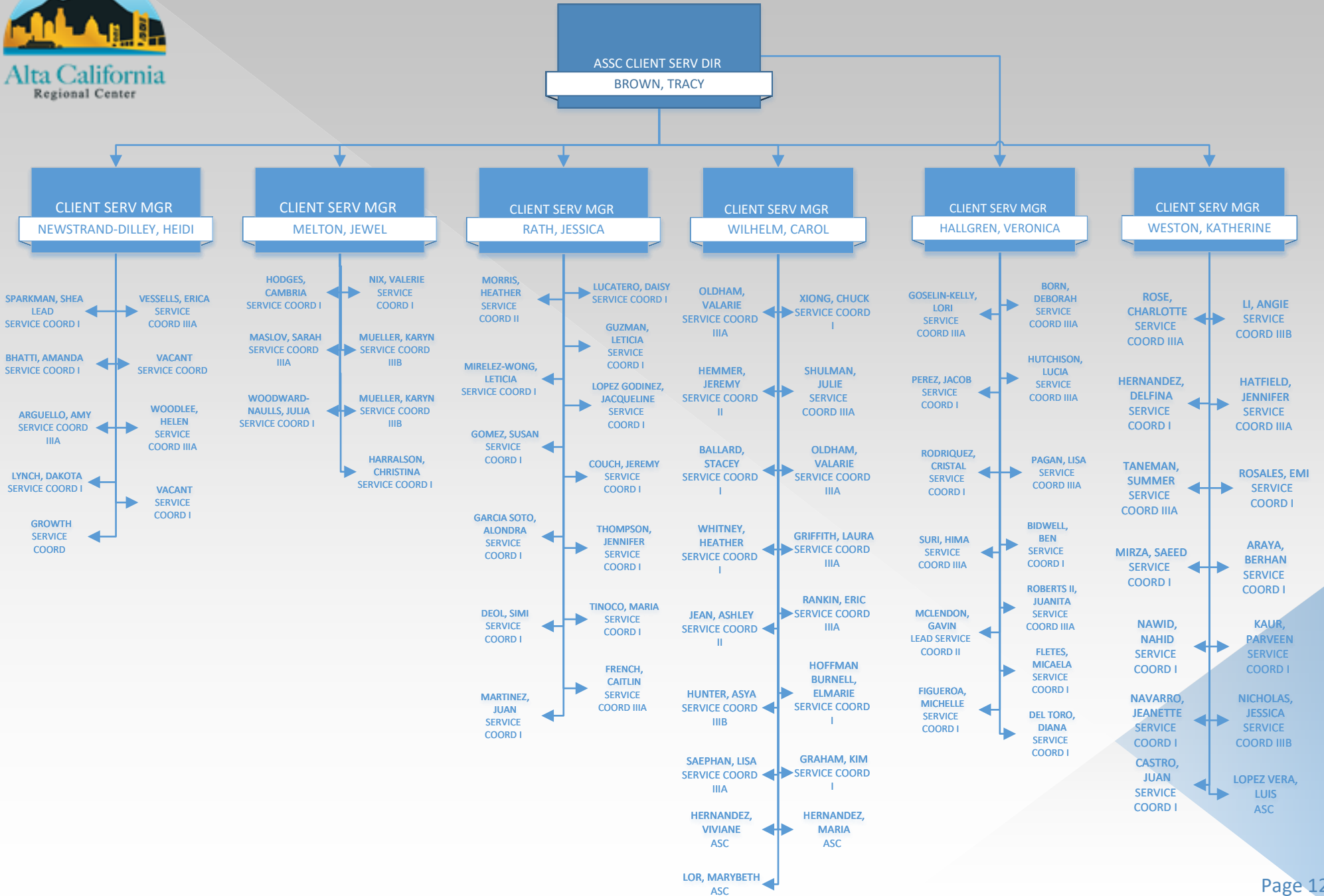
ASSC CLIENT SERV DIR  
MANN, JAS





ASSC CLIENT SERV DIR  
BROWN, TRACY







**GEN SERV MGR**  
**MILLER, TARA**

**OFF SUPV**  
**NOLAN-KERR, KIMBERLY**

**FACIL COORDINATOR**  
**GOMEZ, BRADY**

**FACIL COORDINATOR**  
**VACANT**

**OFF SUPV**  
**LEE, XE**

