



EXECUTIVE ASSISTANT
HORCH, ZACHARY

CSS DIR
DECKER, JOHN

COMM SERV MGR
DUCHENE, MICHELLE

COMM SERV MGR
BARR, SCOTT

PHILLIPS, RHONDA
COMM SERV SPEC – HOUSING
SPECIALIST

COMM SERV MGR
ELLER, JORDAN

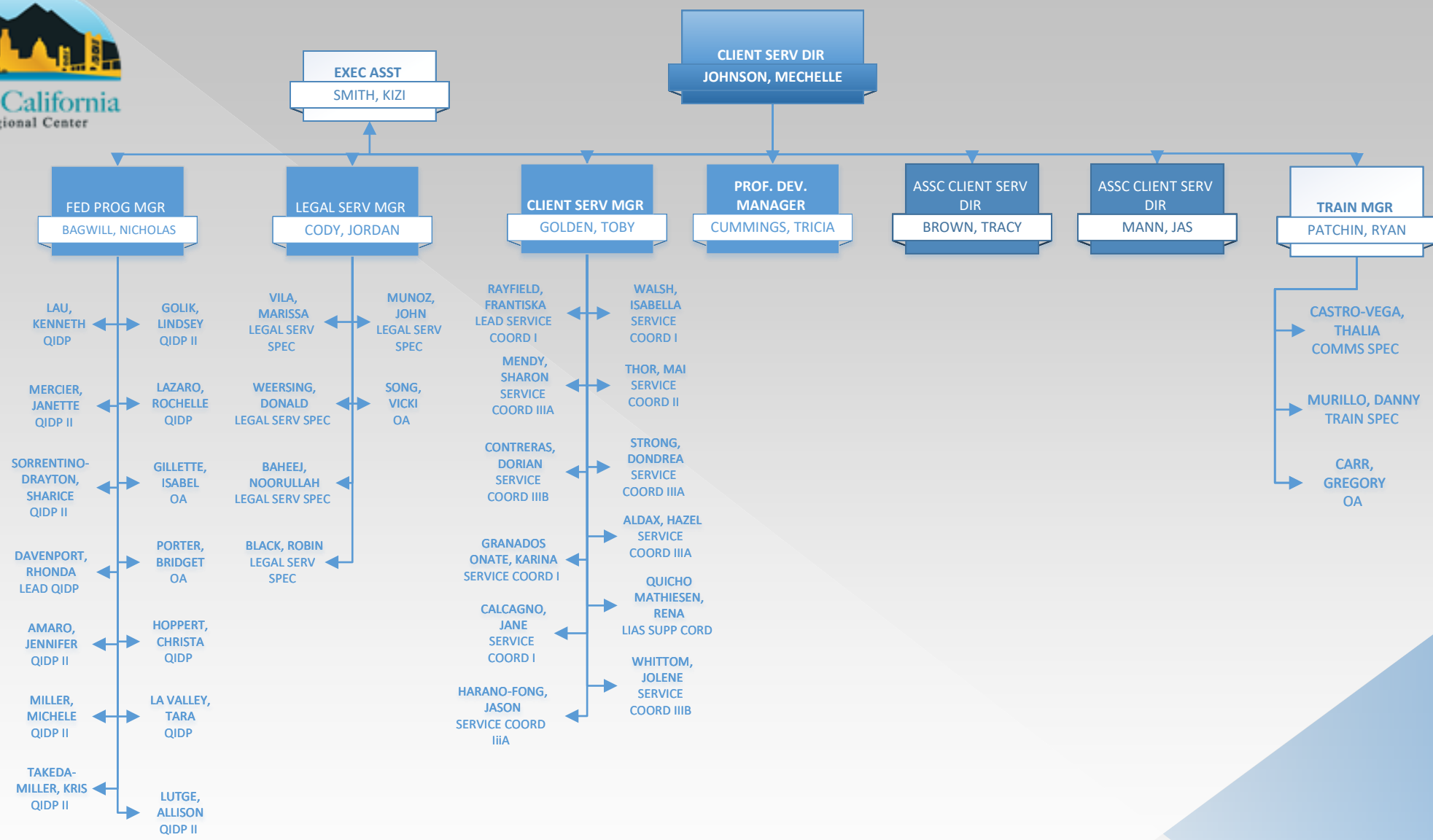
COMM SERV MGR
NERI, HELEN

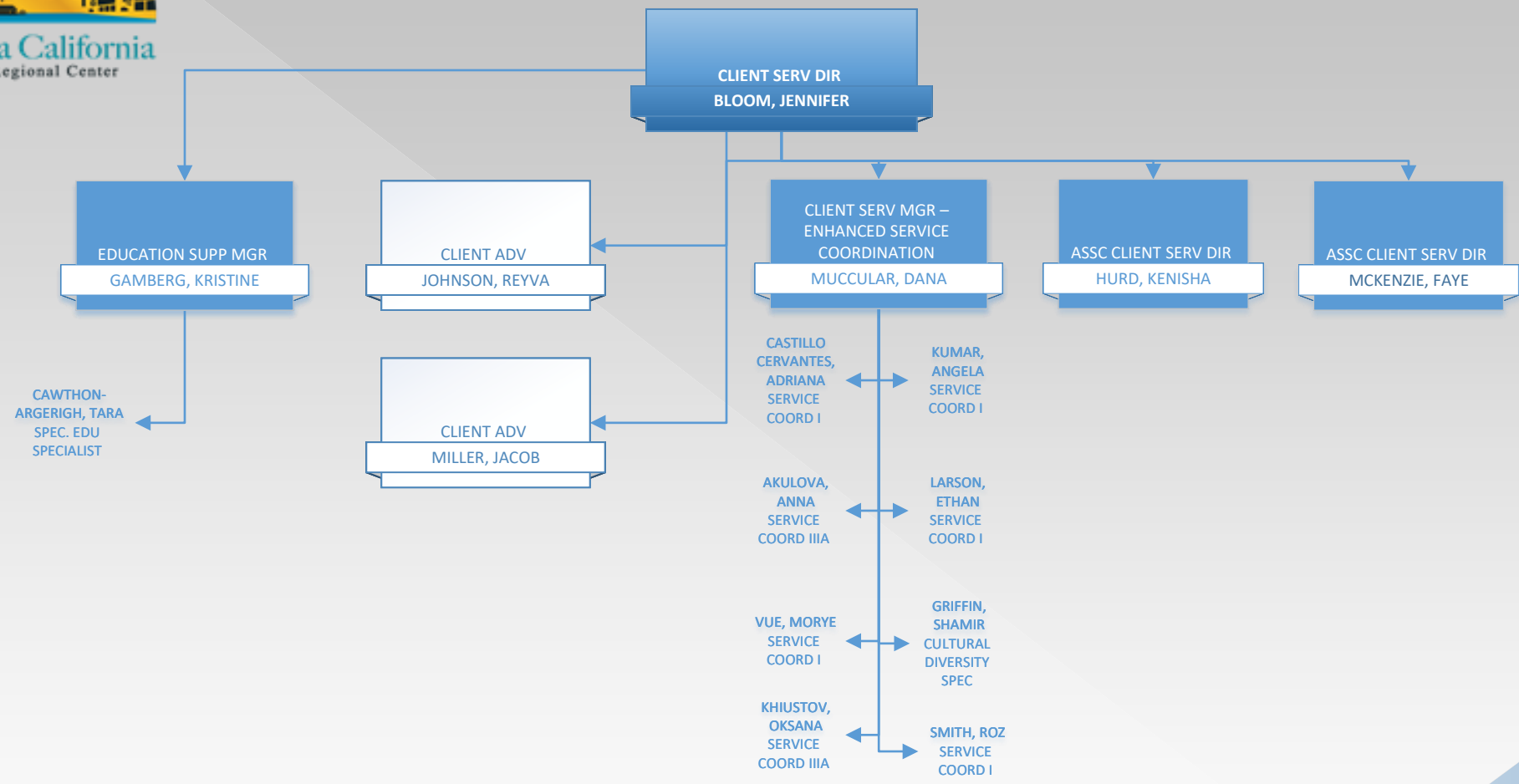
- ARAUJO, JOLANNA
COMM SERV SPEC II
- CRUZ, ALEJANDRA
COMM SERV SPEC II
- VEGA, ISABELLA
COMM SERV SPEC I
- KASPER, THOMAS
COMM SERV SPEC I
- KOGER, DAMION
COMM SERV SPEC II
- FROST, SHAUNA
COMM SERV SPEC I
- MERCADO, MICHAEL
DHH COMM COORD
- RAPPOSELLI, RAVYN
VENDZ COORD
- GARCIA MALDONADO, EBONY
CSS I
- HARRISON JOHNS, ODELIA
COMM SERV SPEC II
- HOBBS, CHRISTINE
VENDOR COORD
- HOPKINS, DENISE
COMM SERV SPEC II
- MOORMAN, CARLY
CLIENT EMP SPEC
- LYNN, SAMMI
COMM SERV SPEC I
- JEFFERS, BRANDI
COMM SERV SPEC II
- VACANT
LEAD COMM SERV SPEC I
- ALVAREZ, MELISSA
VENDZ COORD
- VANG, BELINDA
VENDZ COORD

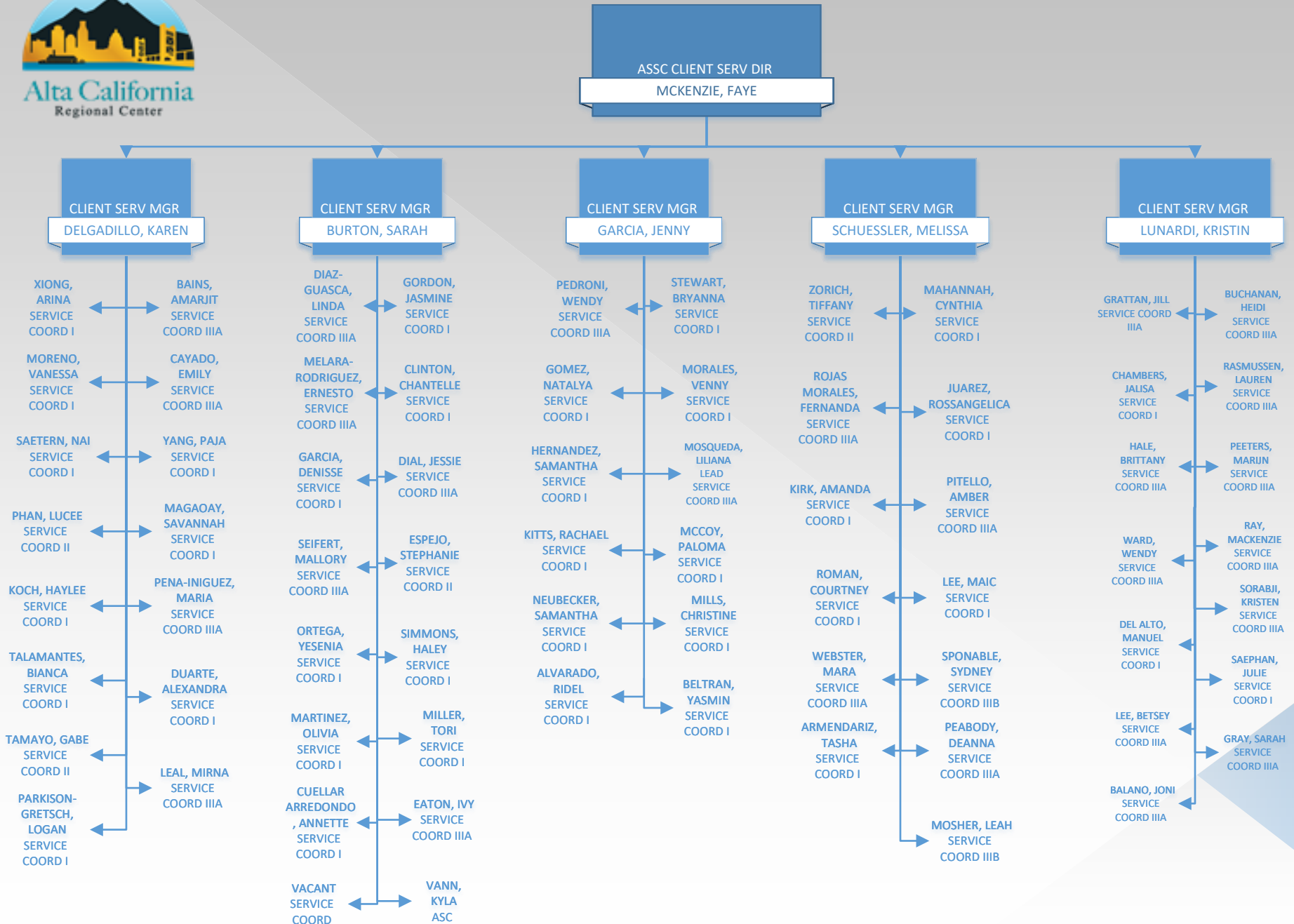
- ZEPEDA, YVETTE
COMM SERV SPEC II
- DRAPER, KYLEE
HCBS SPEC
- LAMISON, RHIANNA
COMM SERV SPEC I
- VACANT
COMM SERV SPEC I
- VACANT
OA
- YUEN, WAYSON
COMM SERV SPEC I
- KAJLEY, ALINA
COMM SERV SPEC II
- VACANT
HCBS SPEC
- JENKINS, JALESA
SIR ASST.
- LAMB, KYLIE
SIR ASST.
- VAN ECK, ALIESIA
HCBS SPEC
- SMITH, BOYD
COMM SERV SPEC I
- GALLOWAY, BRITTNEY
SIR ASST.
- VANGKHANG, STACEY
QACS

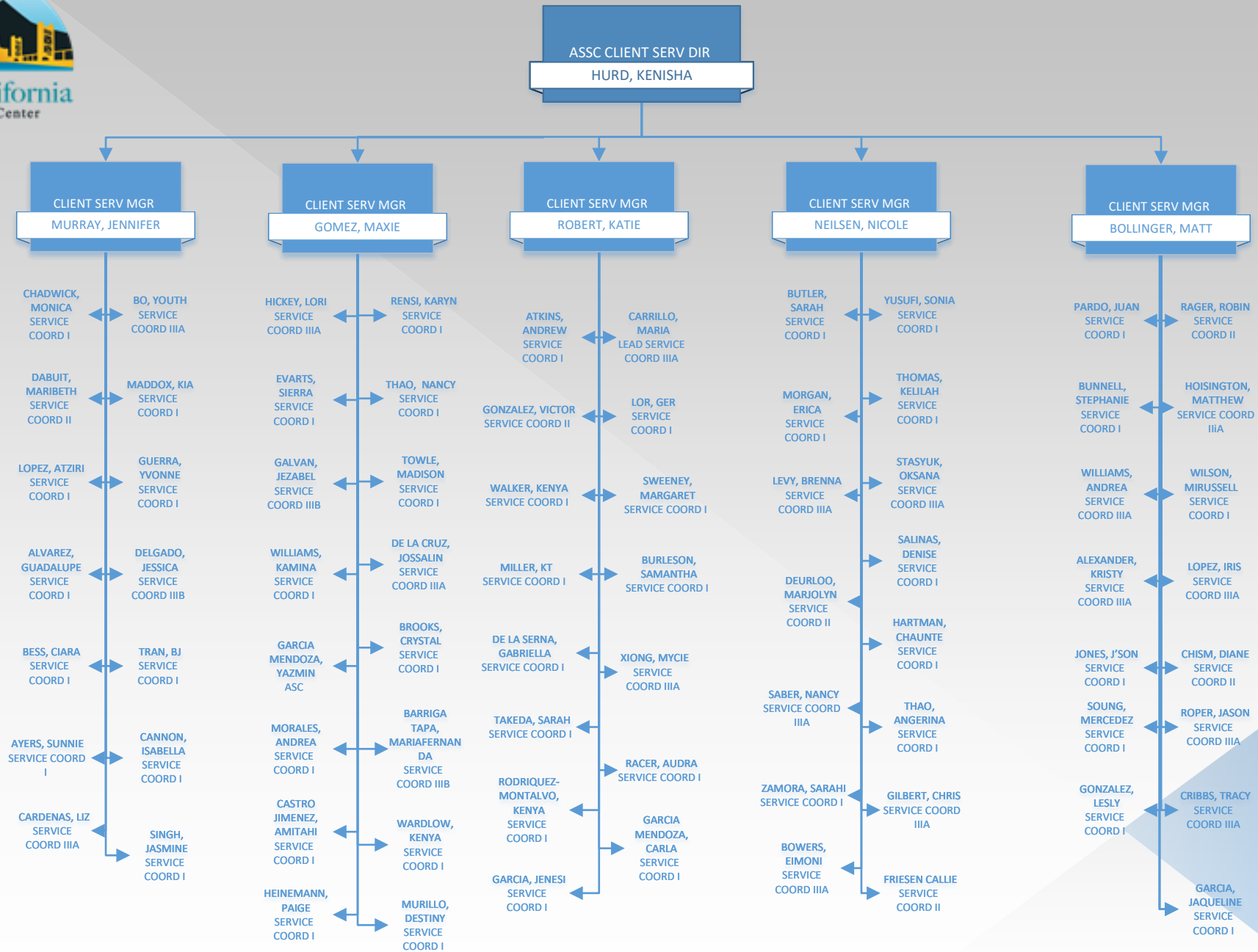
- KILMER, DANIEL
COMM SERV SPEC II
- LEVIER, MONE
COMM SERV SPEC II
- ENRIQUEZ, HUBERT
EMERG RESP COORD
- RHOADES, JANICE
COMM SERV SPEC I
- IWASA, CHRISTY
SERVICE COORD IIIA
- VIDAUERRETA, NORMA
LEAD COMM SERV SPEC II
- WHITE, LINDA
VENDZ COORD
- KURPINSKY, SHARON
SERVICE COORD IIIA
- PETERS, DEANNE
COMM SERV SPEC I
- GABBY, VIRGINIA
COMM SERV SPEC I
- QUALLICK, MEGHAN
FORE INTAKE SPEC
- SHAFFER, KRISTI
COMM SERV SPEC I
- RACHFAL, JULIE
SIR COORD II
- CHAVARRIA-GOMEZ, ISABEL
FORE INTAKE SPEC

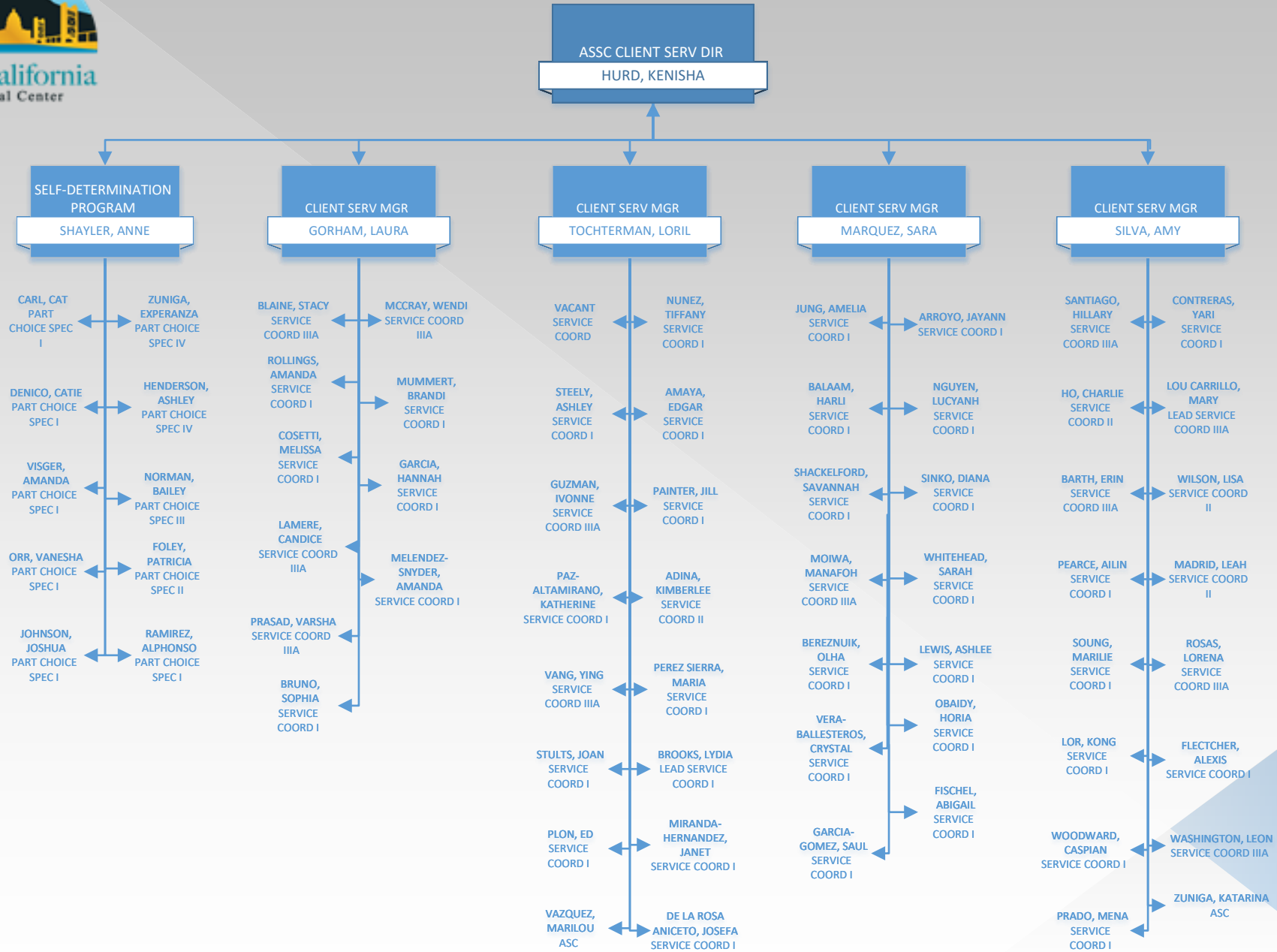
- COLLINS, ALIAJHA
COMM SERV SPEC II
- THAO, KA
TRNSPRT COORD II
- JONES, DELENE
VEND PROCESS
- PADILLA, CHRISTINA
OFFICE ASST
- YELTON, MASON
COMM SERV SPEC I
- FIACCO, ALLISON
COMM SERV SPEC I
- FUKUHARA, ANNA
COMM SERV SPEC I
- JAUREGUI, JESSICA
COMM SERV SPEC I
- LIM, BEVERLY
COMM SERV SPEC I
- RUPORT, SYDNEY
COMM SERV SPEC II
- DI CAVALCANTI, ETHAN
COMM SERV SPEC II
- RICO, MARIA
VENDOR COORD
- JACKSON, JAZZLYN
COMM SERV SPEC I
- PINALES, CHRISTINA
COMM SERV SPEC I





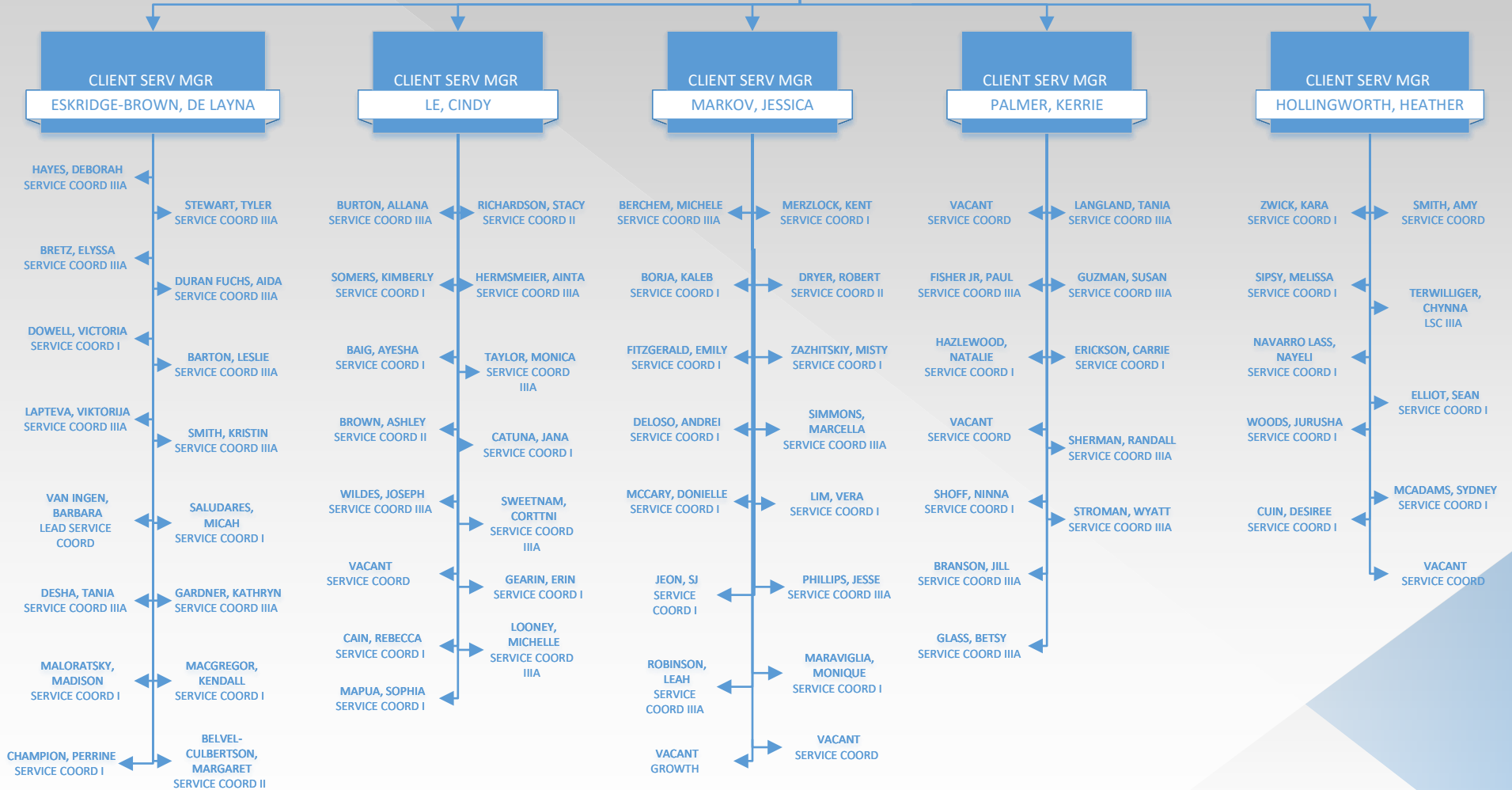








ASSC CLIENT SERV DIR
MANN, JAS

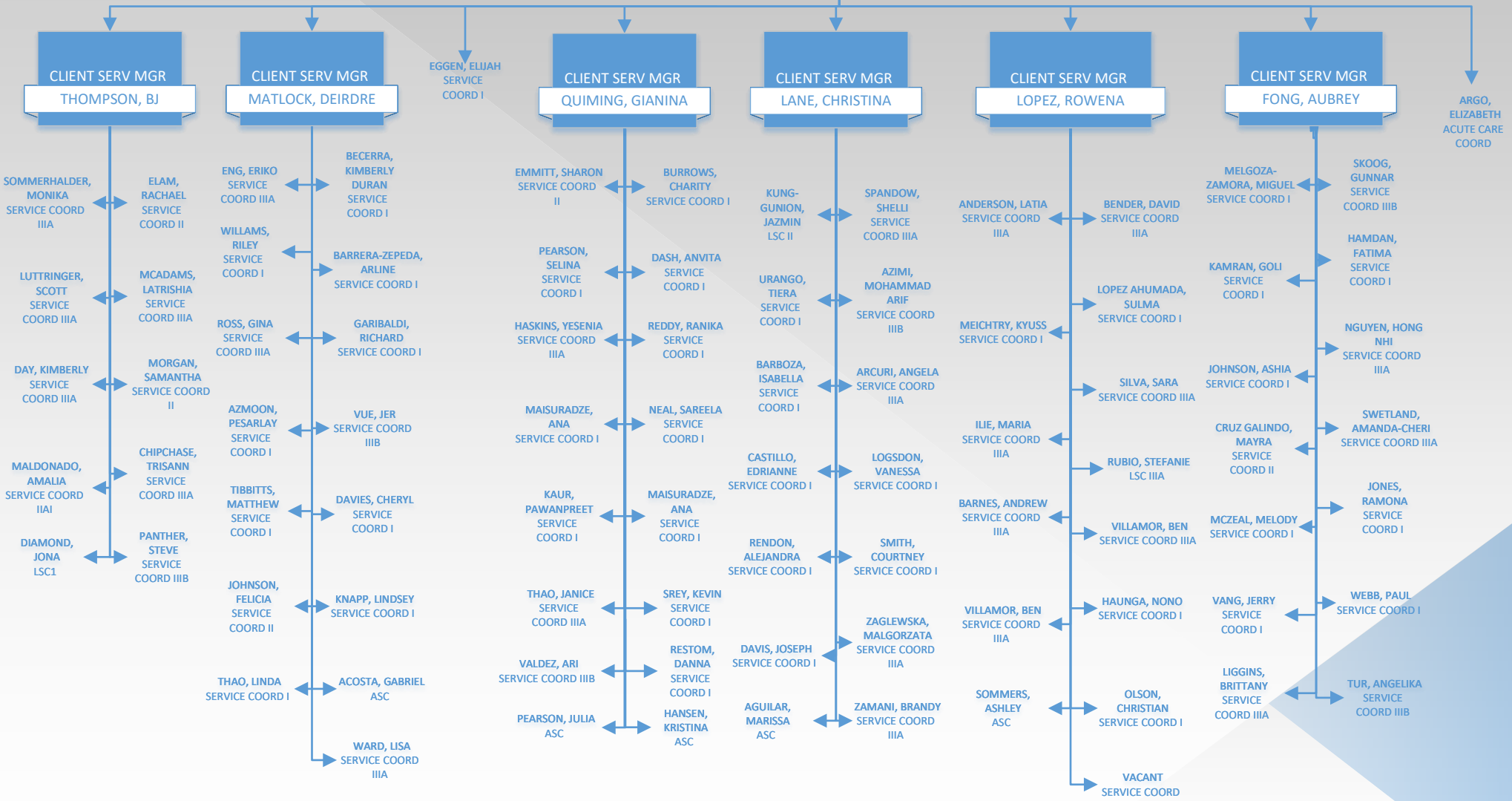


Associate Client Services Director – Adults (Sacramento)

May 22, 2026

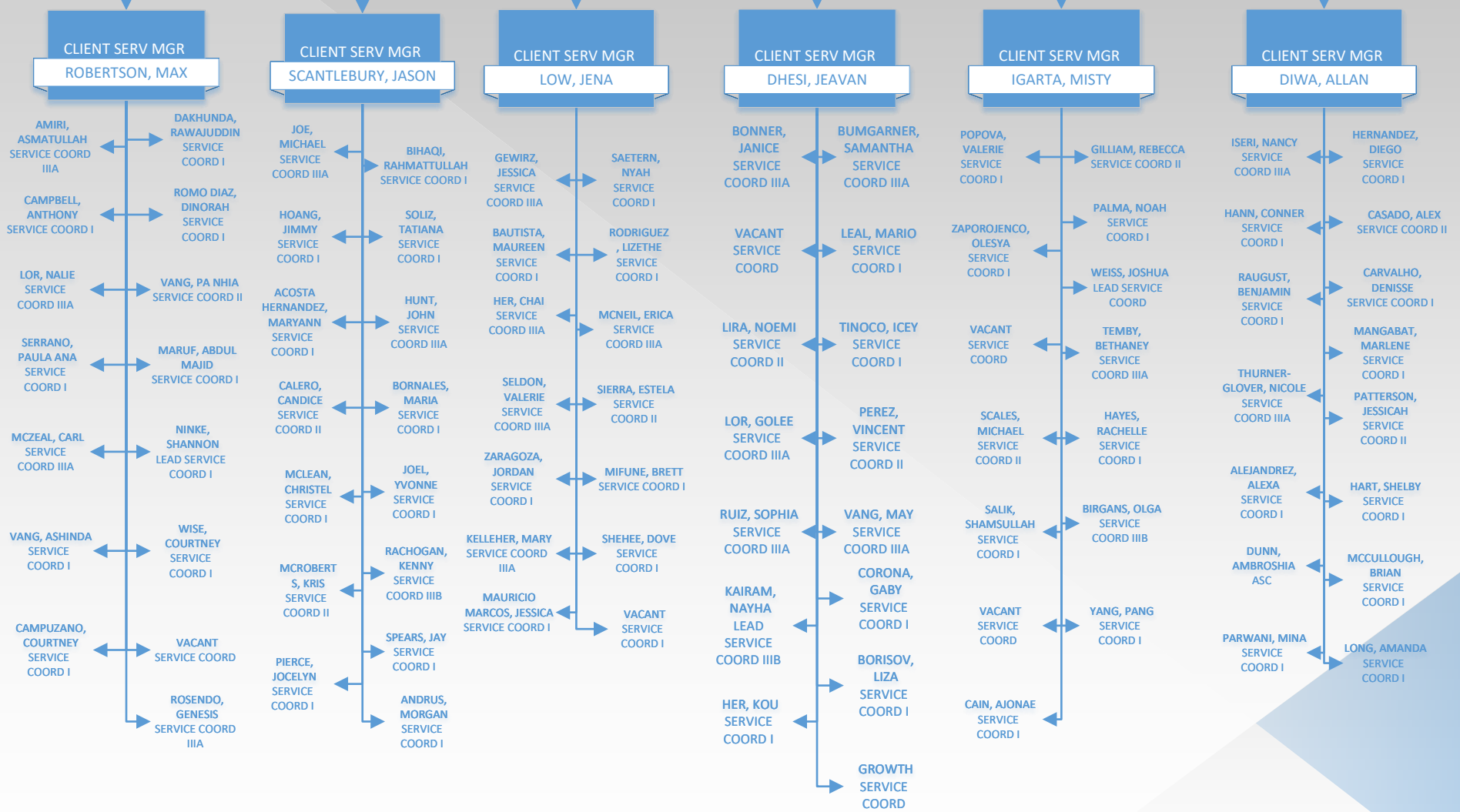


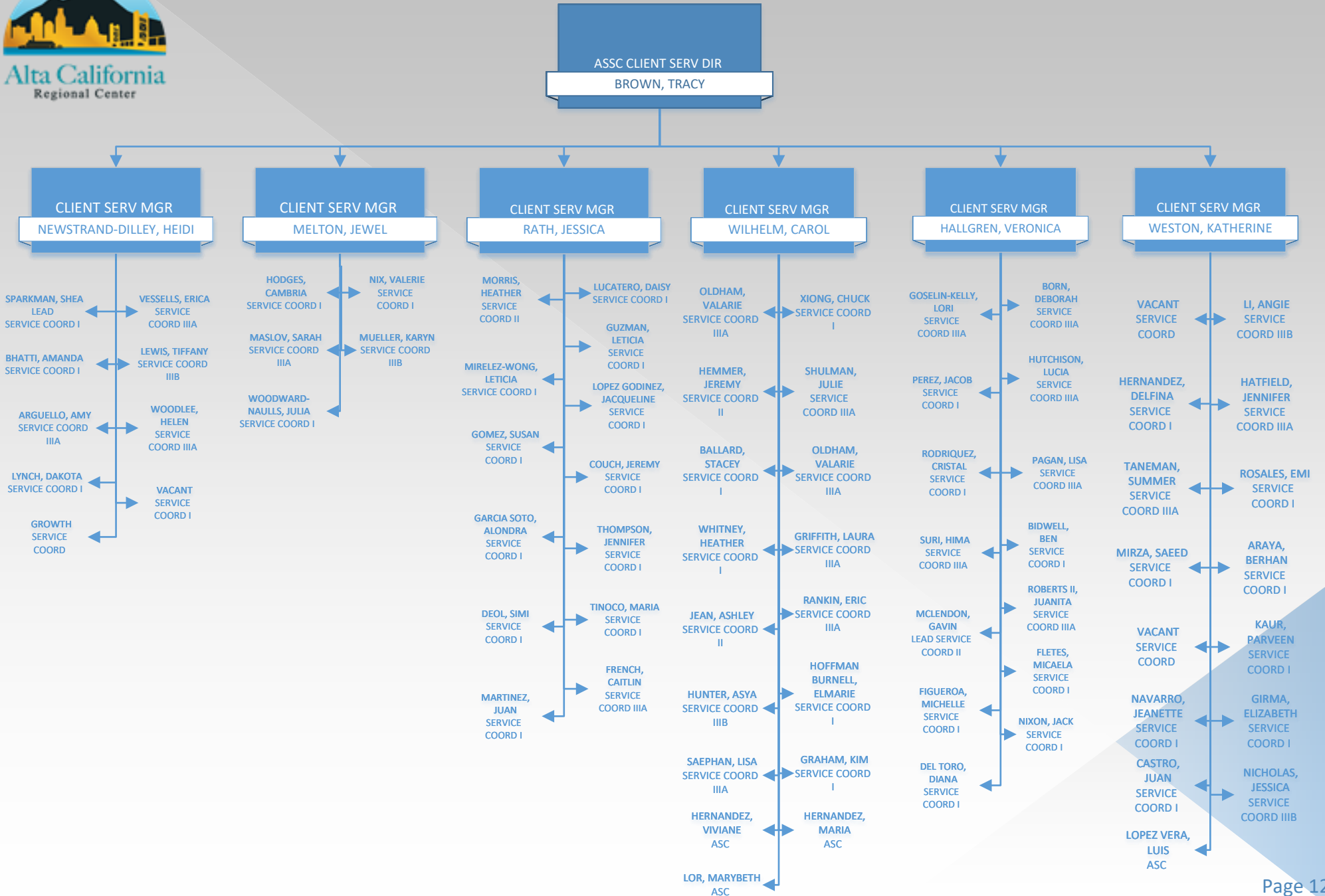
ASSC CLIENT SERV DIR
MANN, JAS





ASSC CLIENT SERV DIR
BROWN, TRACY







GEN SERV MGR
MILLER, TARA

OFF SUPV
NOLAN-KERR, KIMBERLY

FACIL COORDINATOR
GOMEZ, BRADY

FACIL COORDINATOR
VACANT

OFF SUPV
LEE, XE

