



EXECUTIVE ASSISTANT
HORCH, ZACHARY

CSS DIR
DECKER, JOHN

COMM SERV MGR
DUCHENE, MICHELLE

ARAUJO, JOLANNA COMM SERV SPEC II	HARRISON JOHNS, ODELIA COMM SERV SPEC II
CRUZ, ALEJANDRA COMM SERV SPEC II	HOBBS, CHRISTINE VENDOR COORD
VEGA, ISABELLA COMM SERV SPEC I	HOPKINS, DENISE COMM SERV SPEC II
KASPER, THOMAS COMM SERV SPEC I	MOORMAN, CARLY CLIENT EMP SPEC
KOGER, DAMION COMM SERV SPEC II	LYNN, SAMMI COMM SERV SPEC I
FROST, SHAUNA COMM SERV SPEC I	JEFFERS, BRANDI COMM SERV SPEC II
MERCADO, MICHAEL DHH COMM COORD	VACANT LEAD COMM SERV SPEC I
RAPPOSELLI, RAVYN VENDZ COORD	ALVAREZ, MELISSA VENDZ COORD
GARCIA MALDONADO, EBONY CSS I	VANG, BELINDA VENDZ COORD

COMM SERV MGR
BARR, SCOTT

ZEPEDA, YVETTE COMM SERV SPEC II	VACANT HCBS SPEC
DRAPER, KYLEE HCBS SPEC	JENKINS, JALESA SIR ASST.
LAMISON, RHIANNA COMM SERV SPEC I	LAMB, KYLIE SIR ASST.
VACANT COMM SERV SPEC I	VAN ECK, ALIESIA HCBS SPEC
VACANT OA	SMITH, BOYD COMM SERV SPEC I
YUEN, WAYSON COMM SERV SPEC I	GALLOWAY, BRITTNEY SIR ASST.
KAJLEY, ALINA COMM SERV SPEC II	VANGKHANG, STACEY QACS

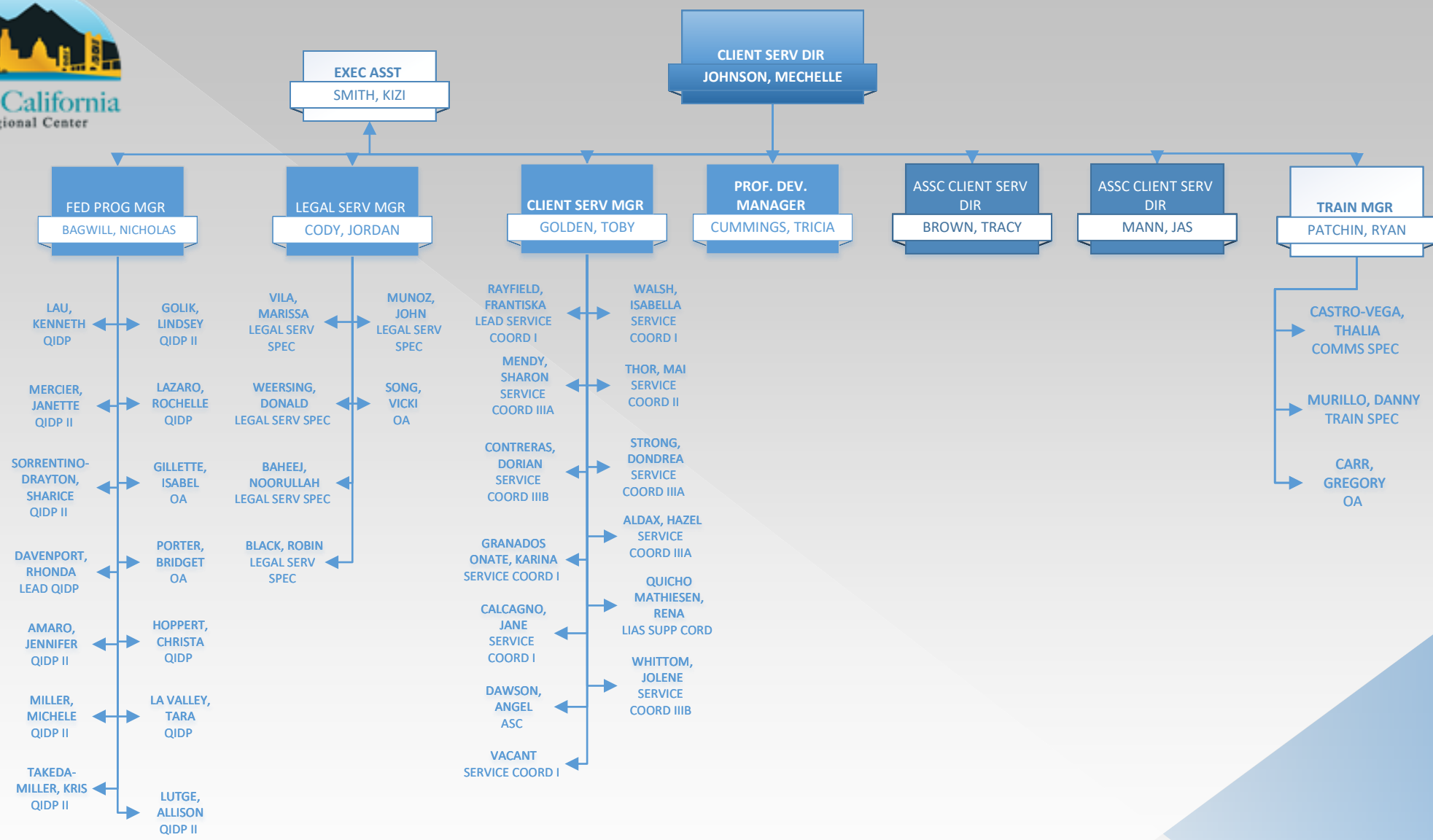
PHILLIPS,
RHONDA
COMM SERV
SPEC – HOUSING
SPECIALIST

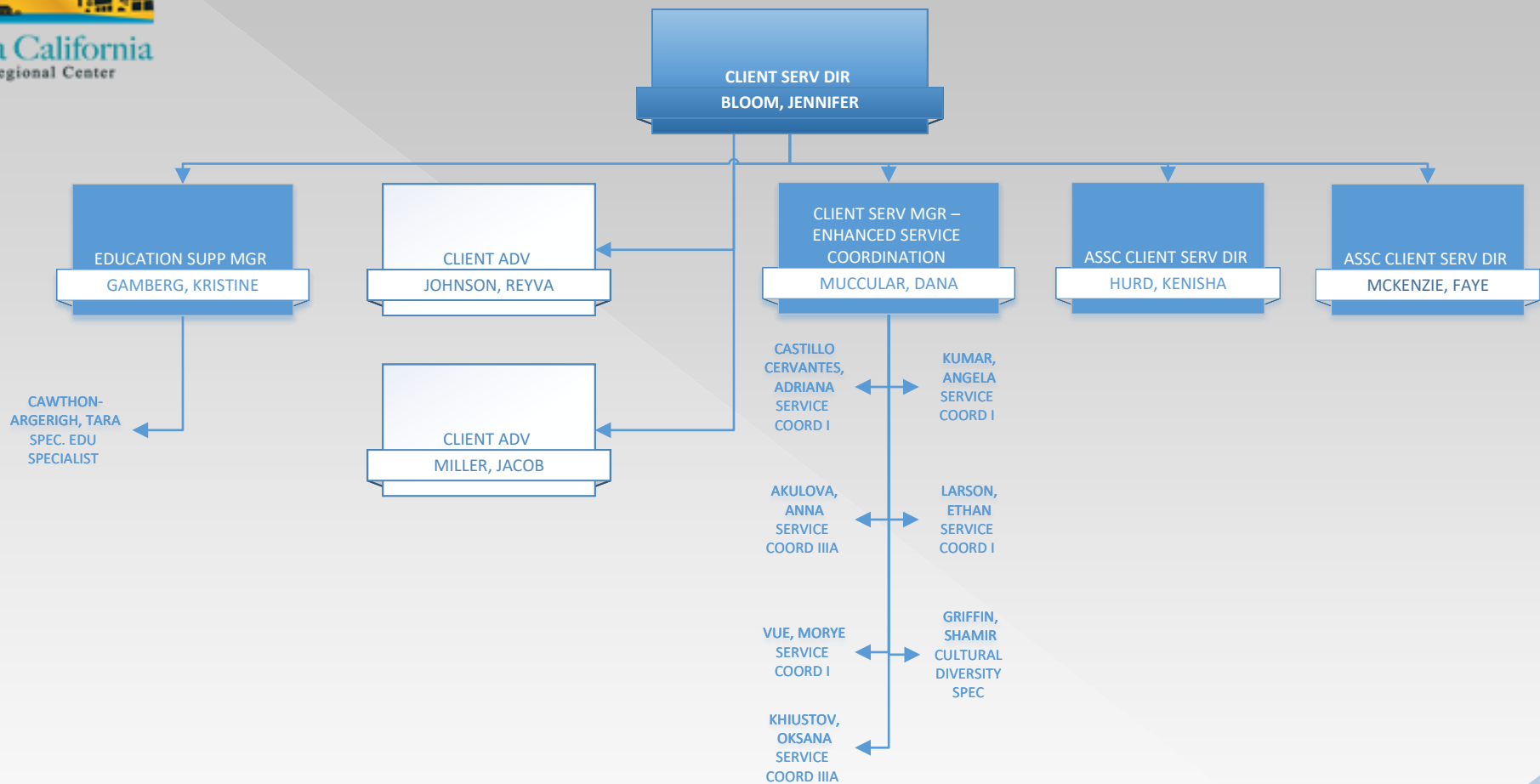
COMM SERV MGR
ELLER, JORDAN

KILMER, DANIEL COMM SERV SPEC II	KURPINSKY, SHARON SERVICE COORD IIIA
LEVIER, MONE COMM SERV SPEC II	PETERS, DEANNE COMM SERV SPEC I
ENRIQUEZ, HUBERT EMERG RESP COORD	GABBY, VIRGINIA COMM SERV SPEC I
RHOADES, JANICE COMM SERV SPEC I	QUALLICK, MEGHAN FORE INTAKE SPEC
IWASA, CHRISTY SERVICE COORD IIIA	SHAFFER, KRISTI COMM SERV SPEC I
VIDAUERRETA, NORMA LEAD COMM SERV SPEC II	RACHFAL, JULIE SIR COORD II
WHITE, LINDA VENDZ COORD	CHAVARRIA-GOMEZ, ISABEL FORE INTAKE SPEC

COMM SERV MGR
NERI, HELEN

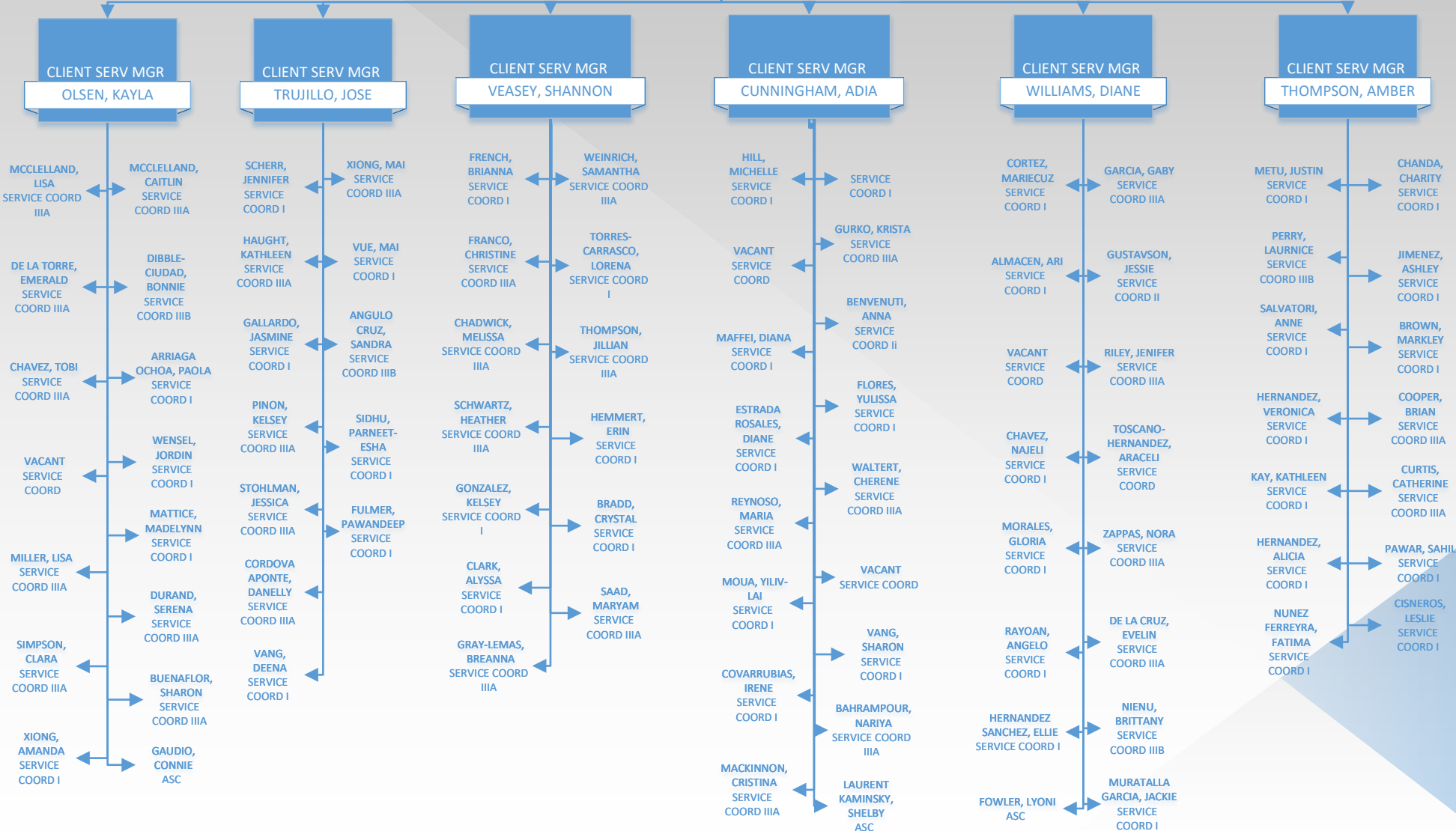
COLLINS, ALIAJHA COMM SERV SPEC II	JAUREGUI, JESSICA COMM SERV SPEC I
THAO, KA TRNSPRT COORD II	LIM, BEVERLY COMM SERV SPEC I
JONES, DELENE VEND PROCESS	RUPORT, SYDNEY COMM SERV SPEC II
PADILLA, CHRISTINA OFFICE ASST	DI CAVALCANTI, ETHAN COMM SERV SPEC II
YELTON, MASON COMM SERV SPEC I	RICO, MARIA VENDOR COORD
FIACCO, ALLISON COMM SERV SPEC I	JACKSON, JAZZLYN COMM SERV SPEC I
FUKUHARA, ANNA COMM SERV SPEC I	

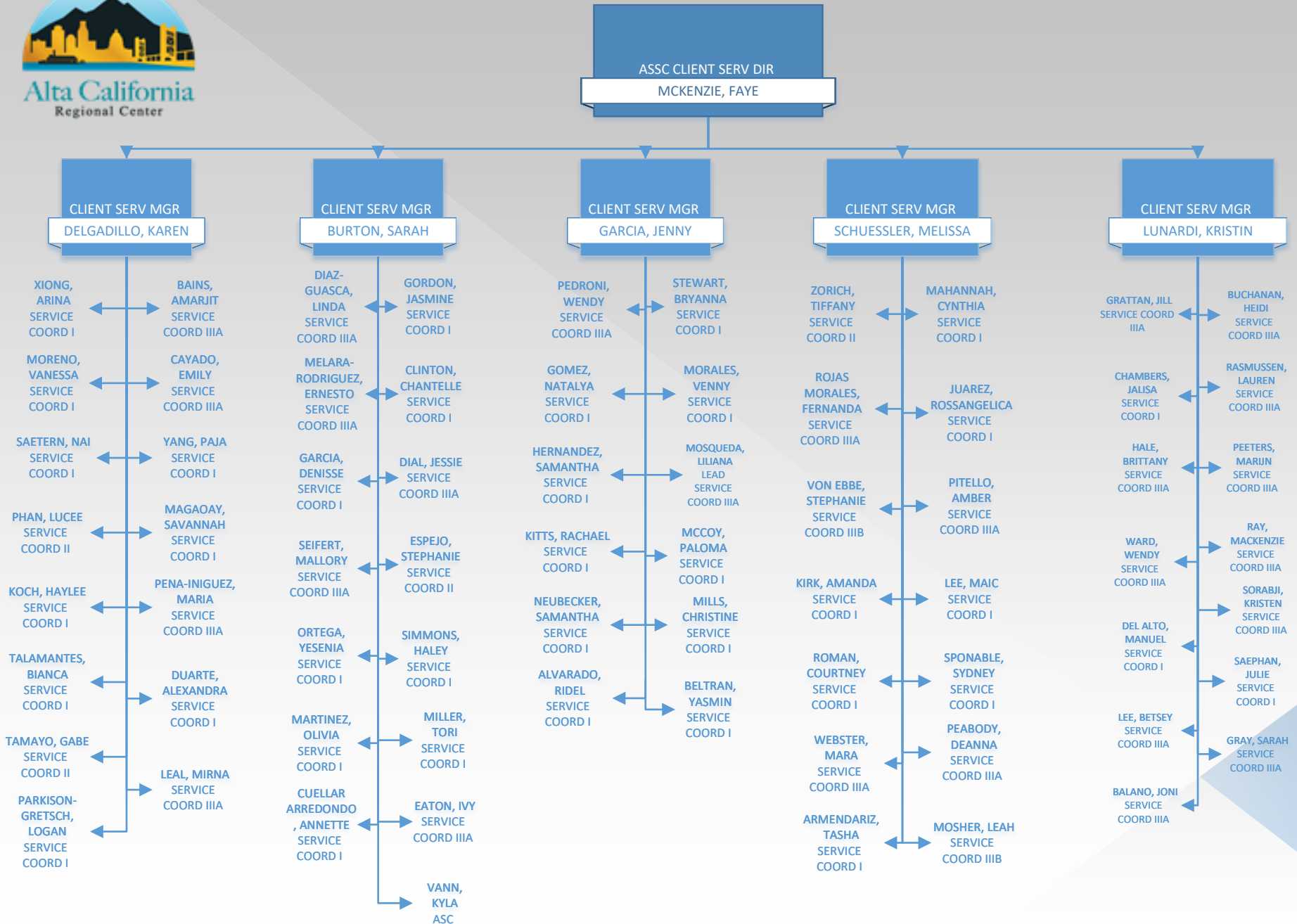


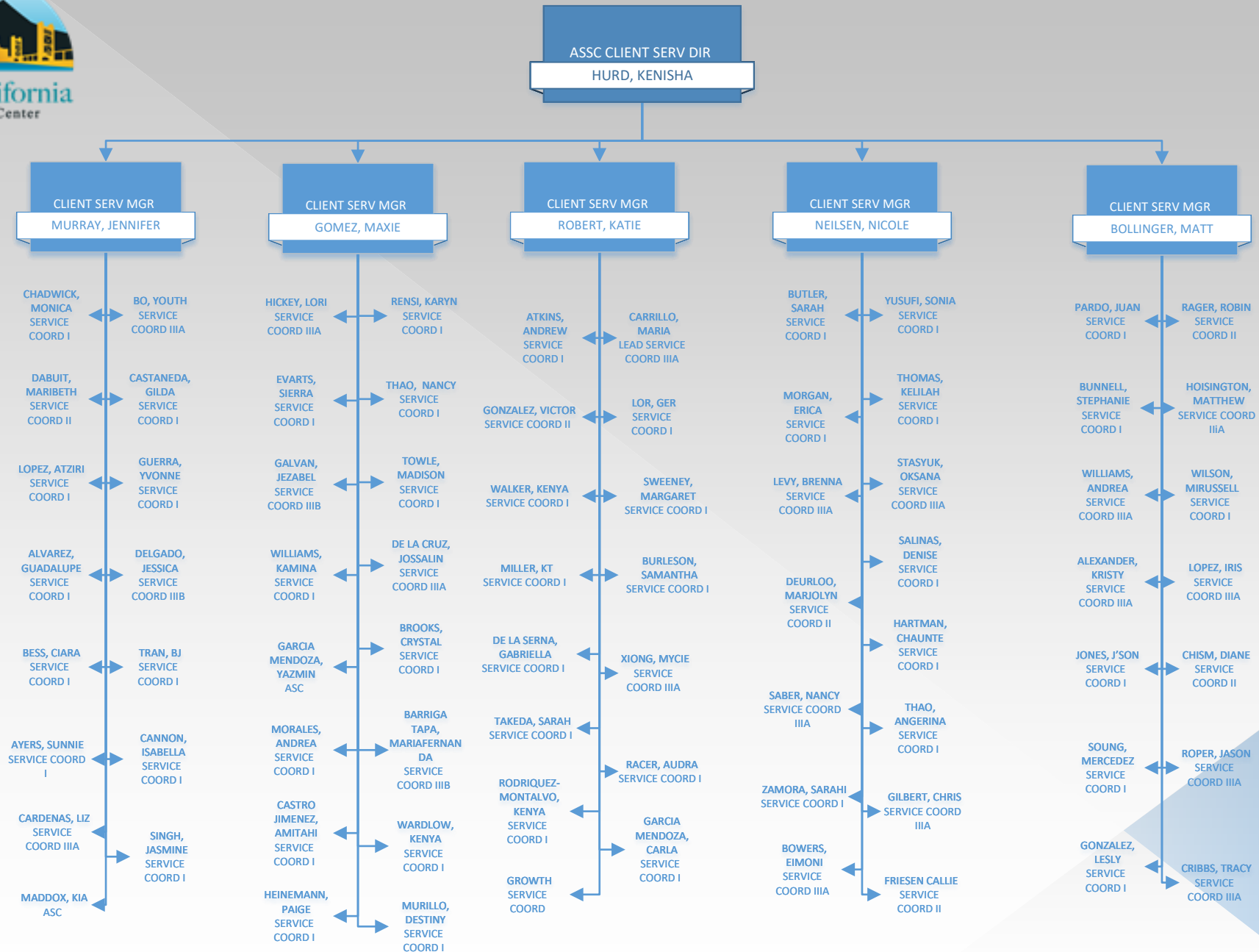


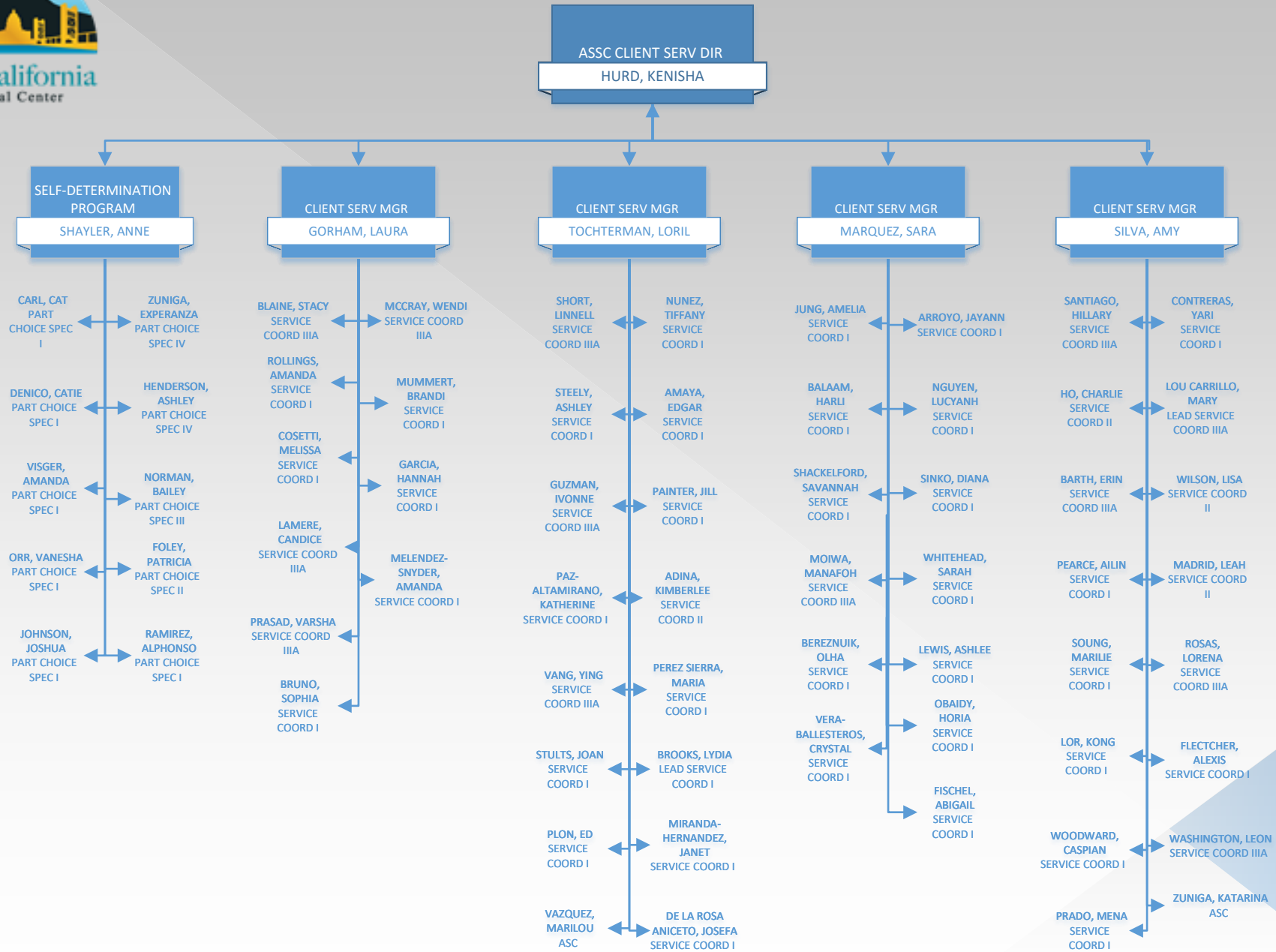


ASSC CLIENT SERV DIR
MCKENZIE, FAYE



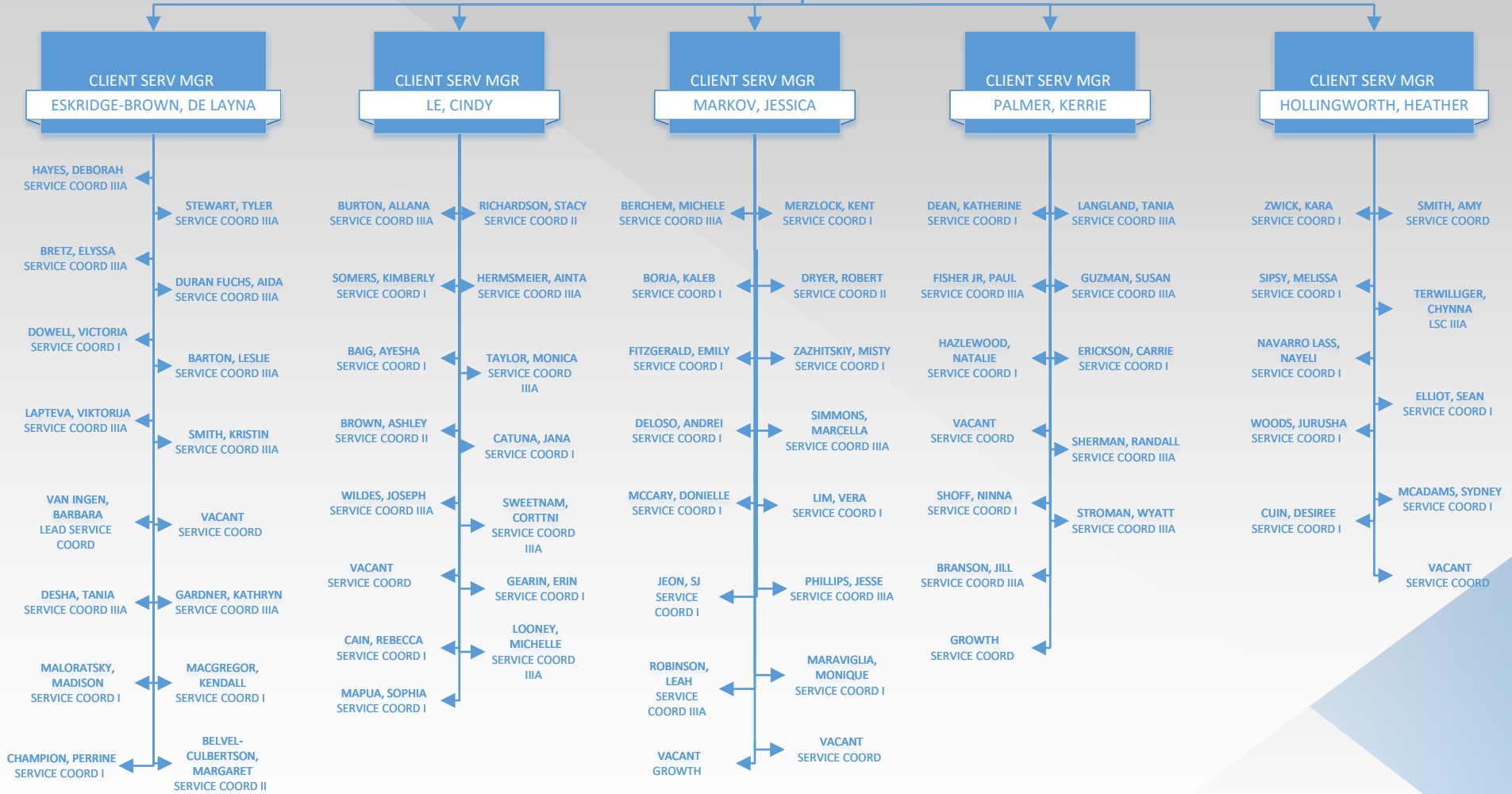








ASSC CLIENT SERV DIR
MANN, JAS

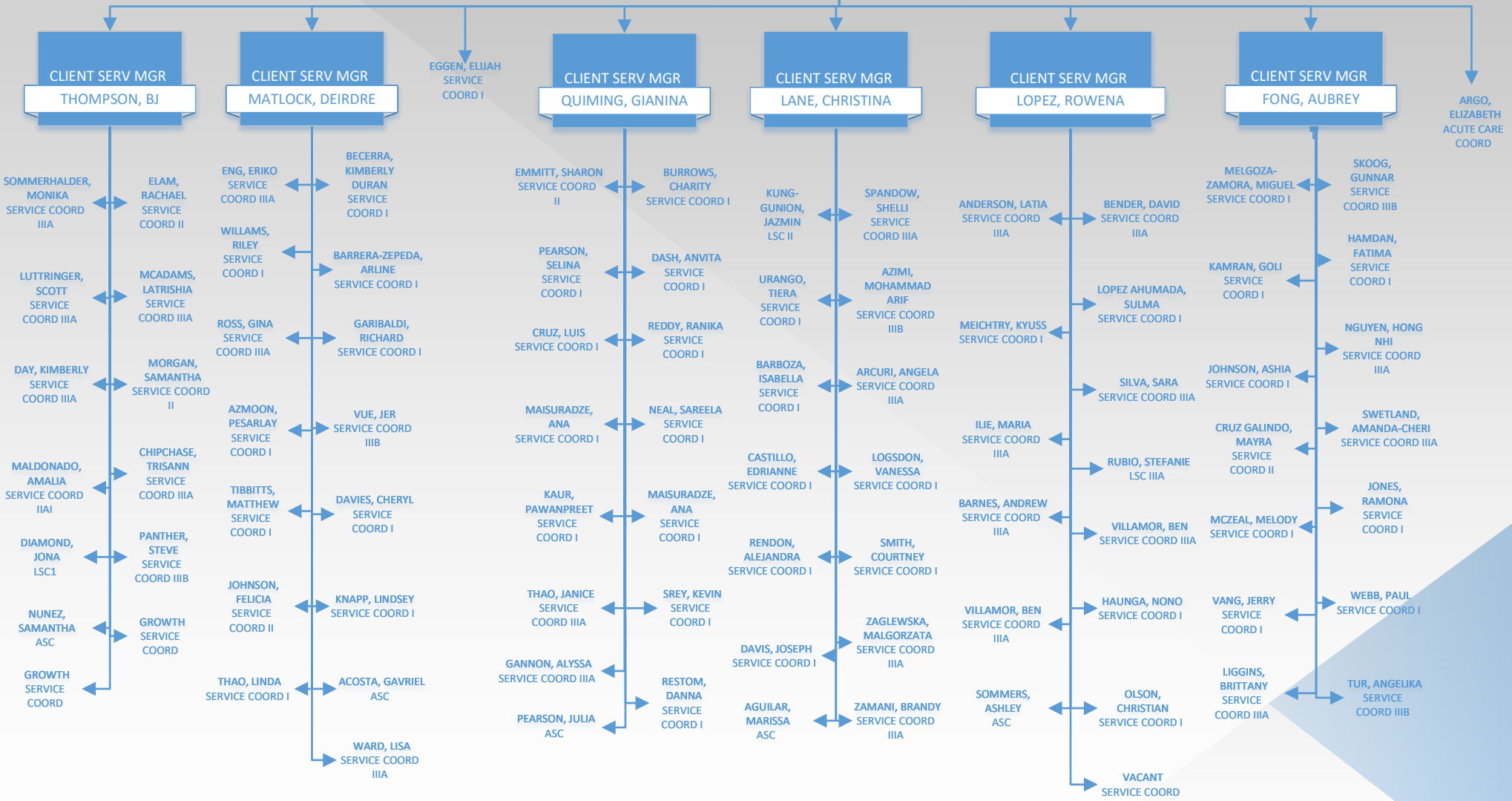


Associate Client Services Director – Adults (Sacramento)

April 3, 2026

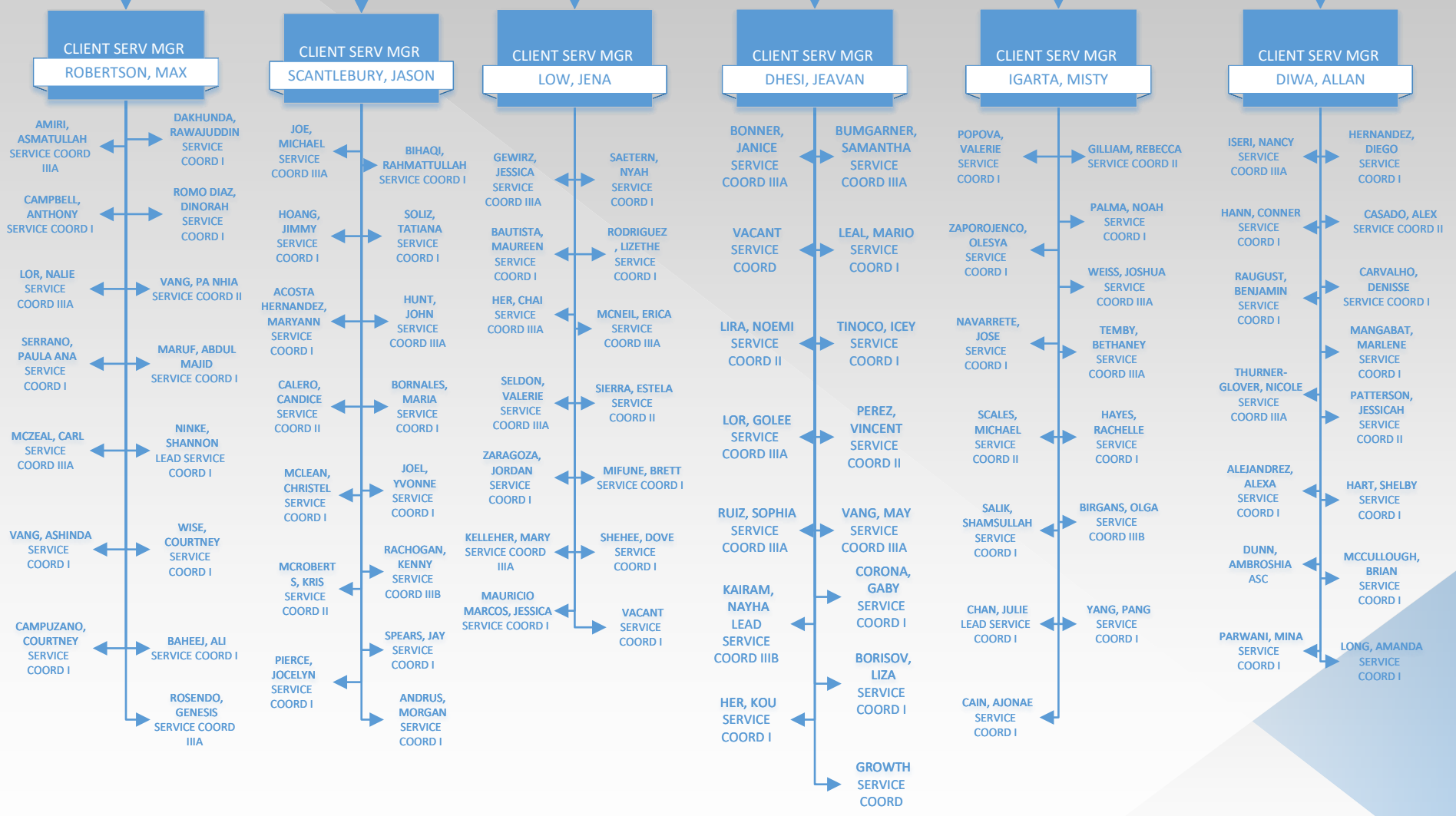


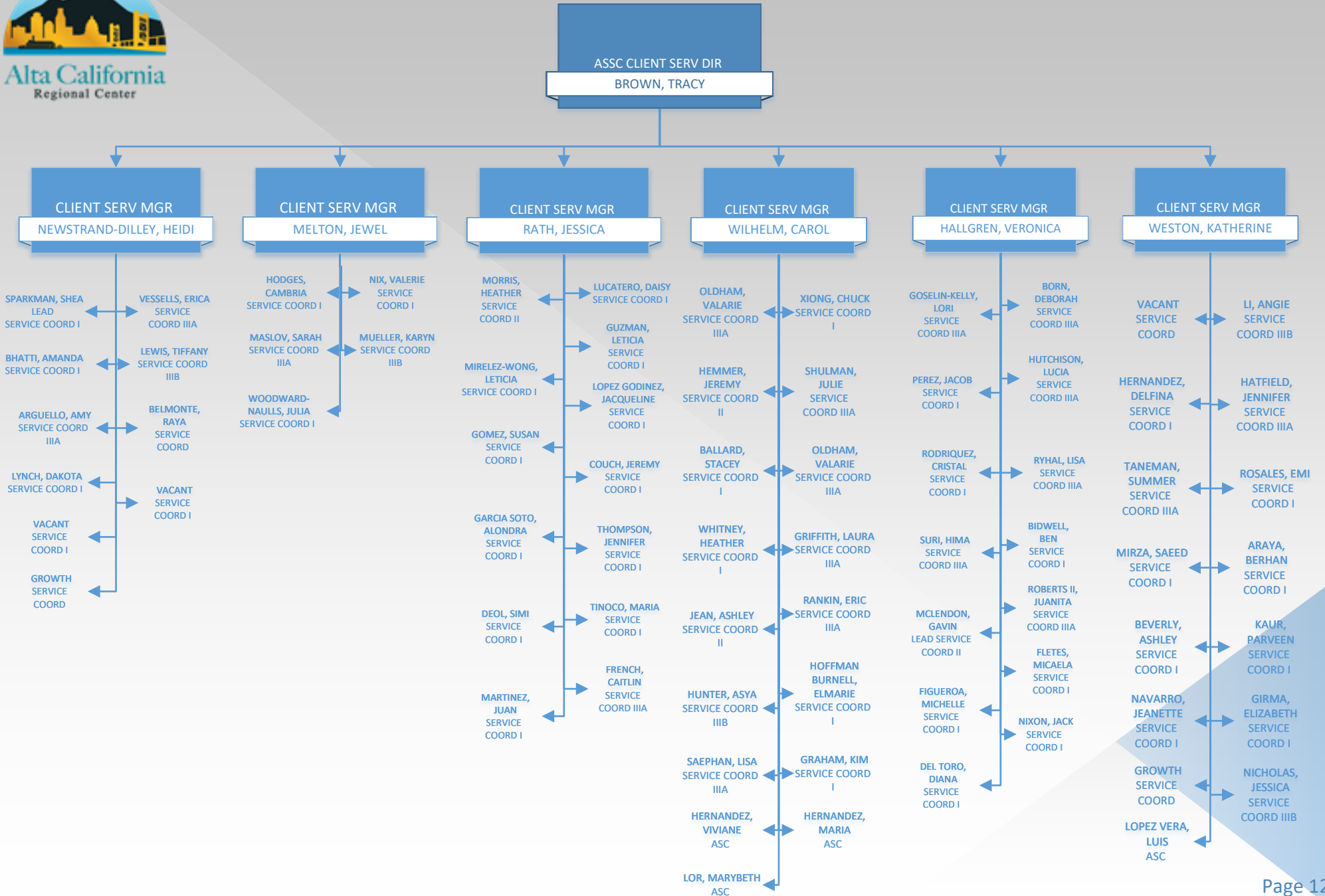
ASSC CLIENT SERV DIR
MANN, JAS





ASSC CLIENT SERV DIR
BROWN, TRACY







GEN SERV MGR
MILLER, TARA

OFF SUPV
NOLAN-KERR, KIMBERLY

FACIL COORDINATOR
GOMEZ, BRADY

FACIL COORDINATOR
MERCADO, JUAN

OFF SUPV
LEE, XE

