



Strategic Plan 2005 – 2010

*(Adapted by the Consumer Advisory Committee
– May 2006)*



Board President's Message

Welcome to the Alta California Regional Center Strategic Plan, a roadmap to our future. This Strategic Plan reflects our shared belief that this regional center has the opportunity to excel in the delivery of high quality services and supports for persons with developmental disabilities and their families. The Board of Director's further recognizes that to do this will require strong leadership, one that is committed to the vision and values of the Lanterman Developmental Disabilities Services Act. It is within this frame of reference that the Strategic Plan was developed. The Strategic Plan captures our shared beliefs and provides clear direction for the agency and its staff to achieve our desired future.

We are committed to not only succeed, but to excel in what we do. To this end, the Board of Directors, in collaboration with consumers, families and stakeholders, will establish performance expectations and measures that will enable us to routinely monitor our progress in delivering excellent services and supports. Our focus is on meeting the needs of the consumers and families served by the regional center, and we intend to do this with due diligence.

Gail Janke
Past Board President

Regina Collins
Board President

Executive Director's Message

I am very pleased to share this Strategic Plan for the Alta California Regional Center. The Plan represents the shared commitment of the agency's Board of Directors, leadership team and staff to provide high quality, best practice based services and supports for person with developmental disabilities and their families. The Plan provides the strategic vision and the roadmap for consumers to be able to achieve satisfying lifestyles in their own communities through delivery of leading edge services and supports.

The Plan sets aggressive targets for Alta California Regional Center to continually improve our performance and customer service. We intend to do this through focused attention on providing quality services and supports, with quality determined by establishing clear performance expectations and measures. We will routinely and diligently monitor our progress using these measures. We intend to excel in everything we do.

Developed in collaboration with consumers, professionals and other community members, this Plan is our promise to the people we serve. On behalf of the Board of Directors and the dedicated professionals of this agency, this Plan represents our ongoing commitment to put consumers first.

Phil Bonnet
Executive Director

The Alta California Regional Center's

- *Mission*

Alta California Regional Center creates and maintains partnerships to support all persons with developmental disabilities, children at risk, and their families in choosing services and supports through individual lifelong planning to achieve satisfying lifestyles in their own communities.

- *Vision*

A future where all individuals are valued members of their communities.



Alta California Regional Center

- *We Value ...*

Quality Services



We value a responsible Board and staff who are working towards ongoing improvement in services for people with developmental disabilities.

Health, Safety and Well-Being



We promise to push for good healthcare, safe and appropriate housing and for people to make their own healthy choices.

Individual Rights, Dignity and Respect



We understand that all people are different and we promise to treat everyone honestly, by the rules and respectfully.

We promise to help each person develop by seeing their own strengths and needs and treat them respectfully.



Access to Life Activities and Experiences

We will build access to housing, education, jobs and fun because being part of the community *is important* to people.



Lifestyle – Inclusion in Community Life

We value education and outreach for community members to make sure all people are welcomed.

We promise to help families stay together, respect personal relationships and work to include people in the community.



Choice and Self-Determination

We promise to help people to do more on their own in a way that respects choice and self-advocacy.

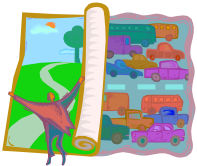
The Alta California Regional Center's Goals

Goal 1 – Individual Planning and Self-Determination



Let people with developmental disabilities and their families control their own lives and make their own decisions based on good information.

Goal 2 – Resource Development



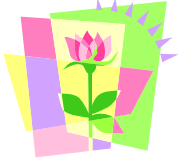
Build services and supports so there are more choices that are easier to get in areas where people live.

Goal 3 – Collaborations and Partnerships



Work together with organizations that everyone in the community uses to make sure people get the right services they need to be part of their communities.

Goal 4 – Health, Safety and Well-Being



Help people use their skills to live healthy, safe and self-respected lives in their communities.

Goal 5 – Community Education and Outreach



Reach out and teach community members about people with developmental disabilities who want to be included in community life with regional center services, if needed.

Goal 6 – Quality and Continuous Performance Improvement



Always advocate for best services and supports that make people's lives easier, giving them choices and opportunities.